

Vacuum sensor (2 colors digital display)

MPS-34 series



● Easy checking with 2 colors display

Output switch ON / OFF display changes color according to the operation. 4 patterns settings.

● Wide pressure range, -0.1 ~ 1.0MPa

Vacuum pressure type: -101.3 kPa, Positive pressure: -0.1 ~ 1MPa
Compound pressure: - 101 ~ 500kPa

● Easy settings

Use UP and DOWN keys to set the value.

Automatic settings mode available.

● Standard switch output and analog output

Switch output (open collector) Analog output (1 ~ 5V)

How to order

MPS - V 34 R - N G A

① Pressure range

V	Vacuum
P	Positive
R	Compound

② Port size

R	R1/8(male)
N	NPT1/8(male)
G	G1/8(male)

⑤ Analog option

A	1 ~ 5V Voltage output(standard)
I	4 ~ 20mA Current output

Note) Option I is for positive and Vacuum pressure only.

④ Cable

G	Grommet (2000m cable)
C	M8 (4PIN) plug (2000mm)

③ Output type

N	NPN open collector
P	PNP open collector

Mounting parts

Surface panel mounting of MPS-34

MPS-ACCH9

Adapter for panel mounting (2 types) with its protection cover.



L3 · F3 Bracket of MPS-34

MPS-ACCK10

L3 fitting, F3 fitting and 2 setting screws(M3) set.



M8 cable of MPS-34

MPS-AMB4R-PVC-2M

Cable of 4 lead wires cable (2000mm length) with M8 connector.

Specifications

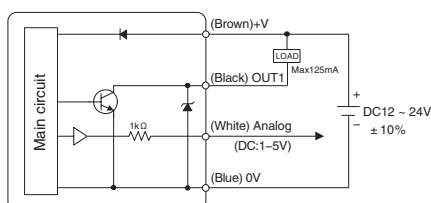
Description		Unit	MPS-V34	MPS-P34	MPS-R34
Fluid			Air (non corrosive, nonflammable gas)		
Diaphragm			Silicon diaphragm		
Pressure range		kPa	-101.3 ~ 0kPa	-0.1 ~ 1MPa	-101 ~ 500kPa
Proof pressure		MPa	0.3	1.5	0.8
Operating ambient temperature		°C	0 ~ 50		
Operating humidity		%	35 ~ 85 RH (without condensation)		
Port size			R1/8 (male), NPT1/8 (male), G1/8 (male) Inlet port size M5(female)		
Power supply		V	DC12 ~ 24 ± 10% , Ripple (Vp-p) less than 10%		
Power consumption		mA	less than 45		
Switch output	type		NPN or PNP open collector 1 point output		
	Current load	mA	max.125mA		
Analog output (Option)	Voltage output	V	DC1 ~ 5 (±2.5%), linearity less than ± 1 % of F.S., output impedance 1kΩ 4 ~ 20 ± 2.5%, linearity less than ± 1 % of F.S		
	Current output	mA	Maximum load impedance 300Ω (at 12V power), 600Ω (at 24V power) Minimum load impedance 50Ω		
Repeatability		%	± 0.2 F.S., 1digit or less		
Temperature characteristic			Less than ± 2% of F.S.(At standard temperature 25°C , range 0 ~ 50°C)		
Response time		ms	Less than 2.5(Variable 24, 250, 500, 1000, 1500 options)		
Hysteresis			Variable		
Display	Digital display		3 1/2 digits 7 segments, 2 colors (Red/Green) LCD		
	Operation		LCD (Green when ON)		
Resolution			0.1kPa	0.01MPa	1kPa
Protection structure			IP40		
Vibration resistance			10 ~ 55Hz, total amplitude 1.5mm (2 hours in direction of XYZ)		
Shock resistance		m/s ²	100 (3 times in direction of XYZ)		
Voltage resistance			AC1000V 1 minute (Between lead and case)		
Electrical connection			Grommet or M8 connector		
Cable	Grommet		φ 4 0.15mm ² 4 lead wires 2m		
	M8 connector		φ 4 0.15mm ² 4 lead wires 100mm (M8 4PIN with male connecto)		
Fittings			L2, F2 fittings		
Mass	Grommet	g	75 (45with lead wire)		
	M8 connector		45 (with connector and lead wire)		

Note 1) Analog output of positive pressure type (P) in range of pressure 0 to 1 Mpa can output DC1~5V and 4~20mA. In range of pressure -0.1 to 0 it does not output.

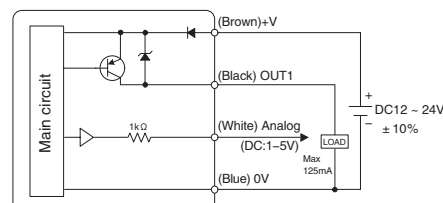
Note 2) Current output type is available for Vacuum type (V) and Positive pressure type (P) only.

Internal circuit

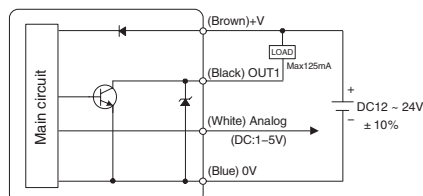
NPN output (Analog voltage output)



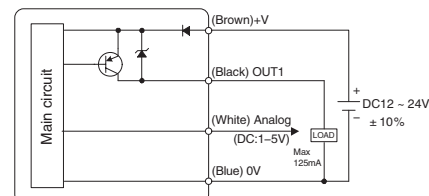
PNP output (Analog voltage output)



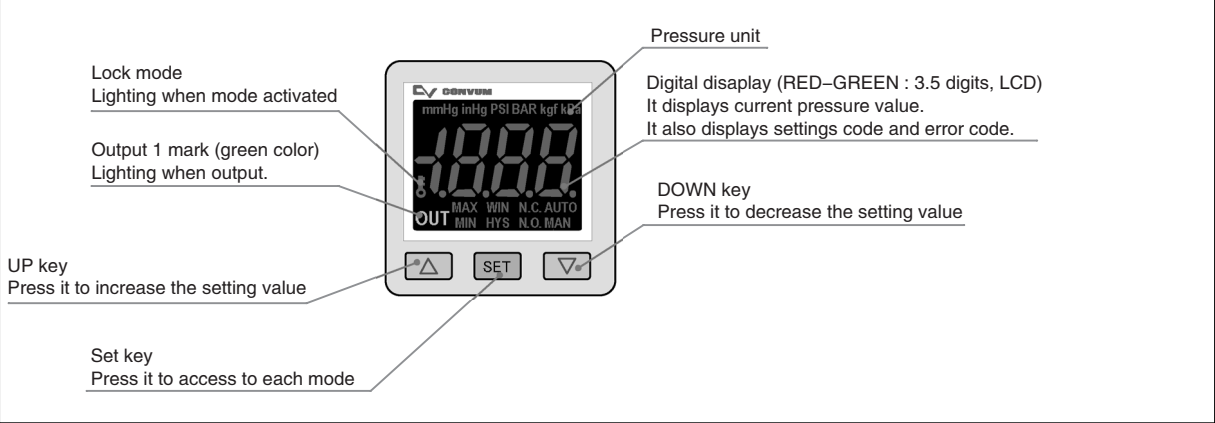
NPN output (Analog current output)



PNP output (Analog current output)



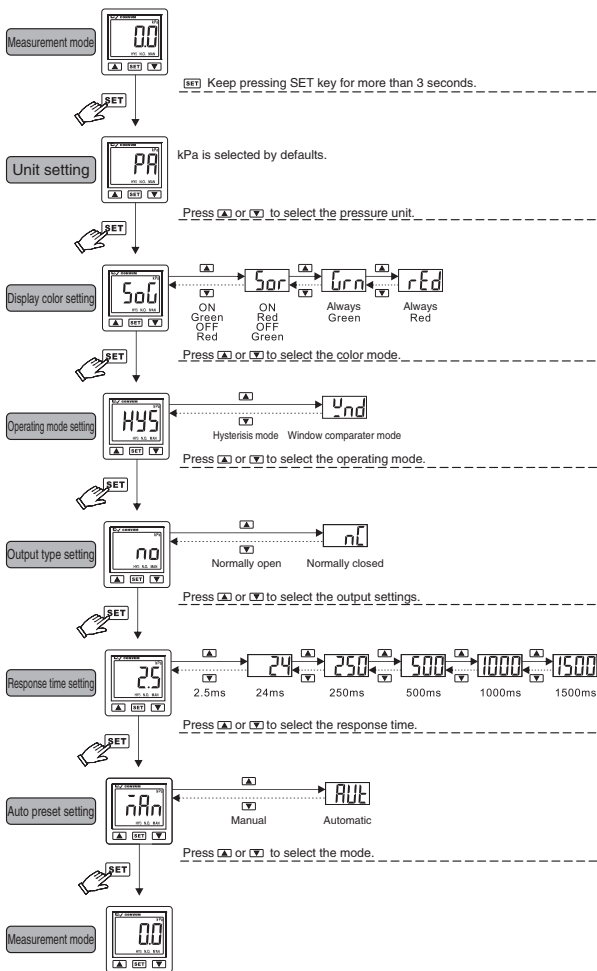
Display description



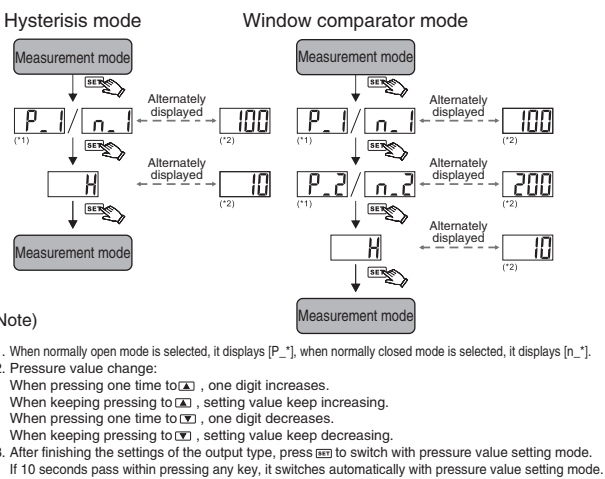
Setting method

Please refer to the instruction manuals for details

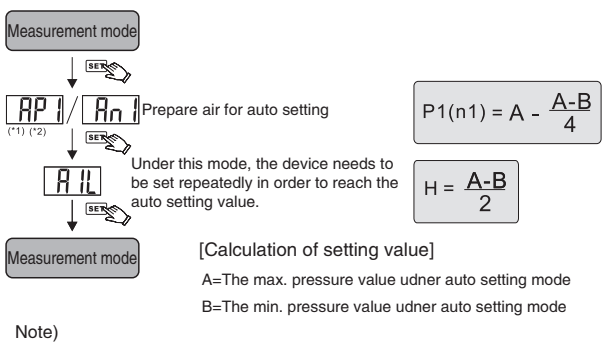
Initial settings mode



Manual settings



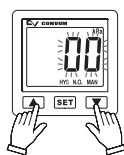
Auto setting mode



Other settings

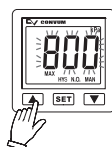
① Zero reset setting:

Press Δ and ∇ at the same time until the "00" is displayed.
Release the keys to end the settings.



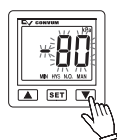
② The MAX. value display mode

Keep pressing Δ for 2 seconds to enter the MAX. value mode.
Pressure sensor will detect the MAX. value and keep display.
Press Δ for 2 seconds to return to measurement mode.

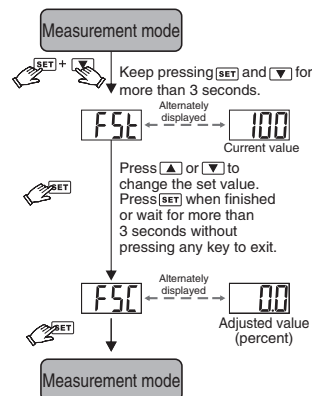


③ The MIN. value display mode

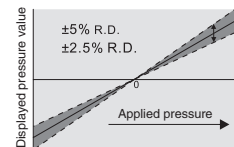
Keep pressing DOWN ∇ 2 seconds to enter the MIN. value mode.
Pressure sensor will detect the MIN. value and keep display.
Press ∇ for 2 seconds to return to measurement mode.



④ Fine adjustment mode



This function eliminates sight differences in the output values and allows uniformity in the numbers displayed. Displayed values of the pressure sensor can be calibrated to within $\pm 5\%$ for MPS-P34/MPS-R34 and $\pm 2.5\%$ for MPS-V34.

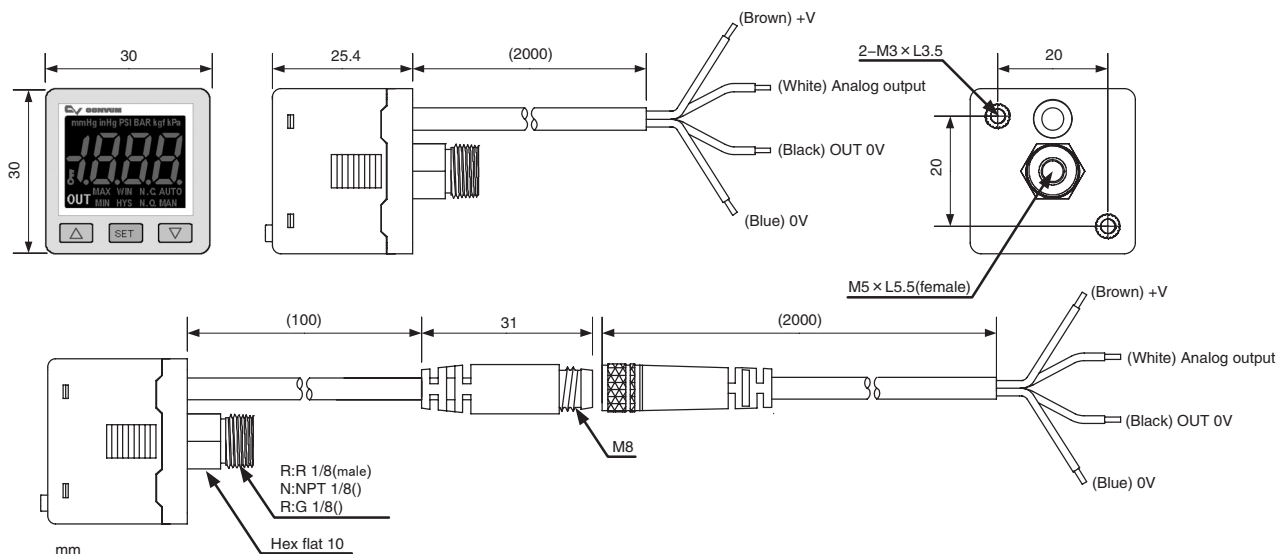


Note)

MPS-P34: When display unit is in Mpa, setting resolution is 0.001MPa.
MPS-R34: When display unit is in kpa, setting resolution is 1kPa.
MPS-V34: When display unit is in kpa, setting resolution is 0.1kPa.

Dimensions

(mm)

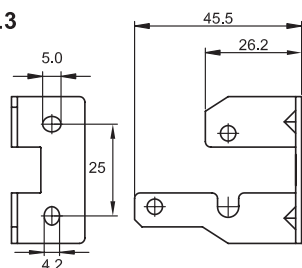


L3 bracket fitting

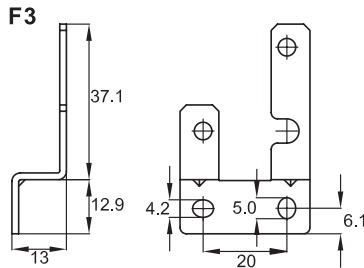
F3 bracket fitting

Surface mounting panel

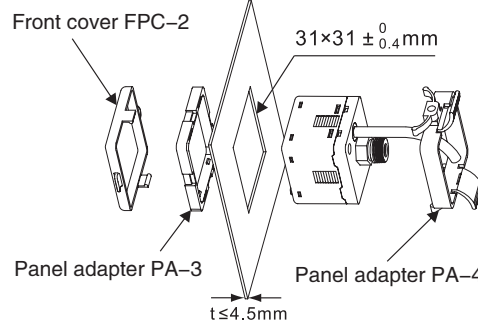
L3



F3



Front cover FPC-2



Panel adapter PA-3

Panel adapter PA-4