


Your Pride Partner KG AUTO

KG Series



특징 (Features)

1. 조작부와 접점부 상·하 분리형으로 설계되었습니다.
(Operating and contact part was planned in separation style)
2. 취부홀 Ø22, Ø25, Ø30로 설계하여 선택 사용시 용이 합니다.
(Attached hole Ø22, Ø25, Ø30 The selection with is various it used)
3. 슬림형은 판넬에서 2.5mm돌출로 측면으로 부터 걸림이 없습니다.
(Slimtype from the panel being caught from the side with 2.5mm projections, is not)
4. 스냅 동작 접점 블록은 기본 1a1b로 설계 되었습니다.
(Contact block was planned basic 1a1b)
5. 광원 출력부는 LED를 기본으로 제작 되었습니다.
(Lamp type is the whole was produced with the LED)
6. SH02210-7003A, 7004A, 7005A 

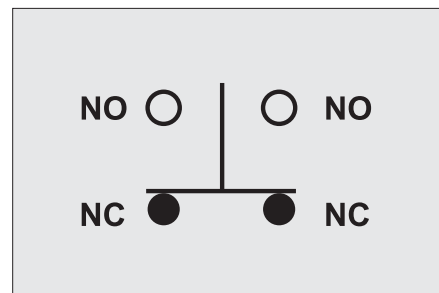
성능 (Performance)

항목(List)	종류(Items)	KG Series 제어용 스위치(Ø22, Ø25, Ø30)
정격용량 (Rating)		125V d.c 1A/250V a.c 5A
절연저항 (Insulating resistance)		100MΩ이상(Min 100MΩ)
내전압 (Withstand voltage)		2,500V a.c, 50/60Hz에서 1분간(2,500V a.c, 50/60Hz 1min)
접촉저항 (Contact resistance)		2Ω 이하
내진동 (Vibration protection)		10~55Hz 복진폭 3mm(10~55Hz Vibration Width 3mm)
내충격 (Shock protection)		약 50g(500%)
사용주의 온도 (Ambient temperature)		-40℃~+55℃
사용주의 습도 (Relative humidity)		45~85% RH
개폐빈도 (Open/close time)		최대 30회/분(Max 30/1min)
수명 (Lifetime)	전기적 (Electrical)	10만회 이상/1,800h(Min 0.1mil/1,800h)
	기계적 (Mechanical)	50만회 이상/1,800h(Min 0.5mil/1,800h)

LED램프 (LED Lamp)

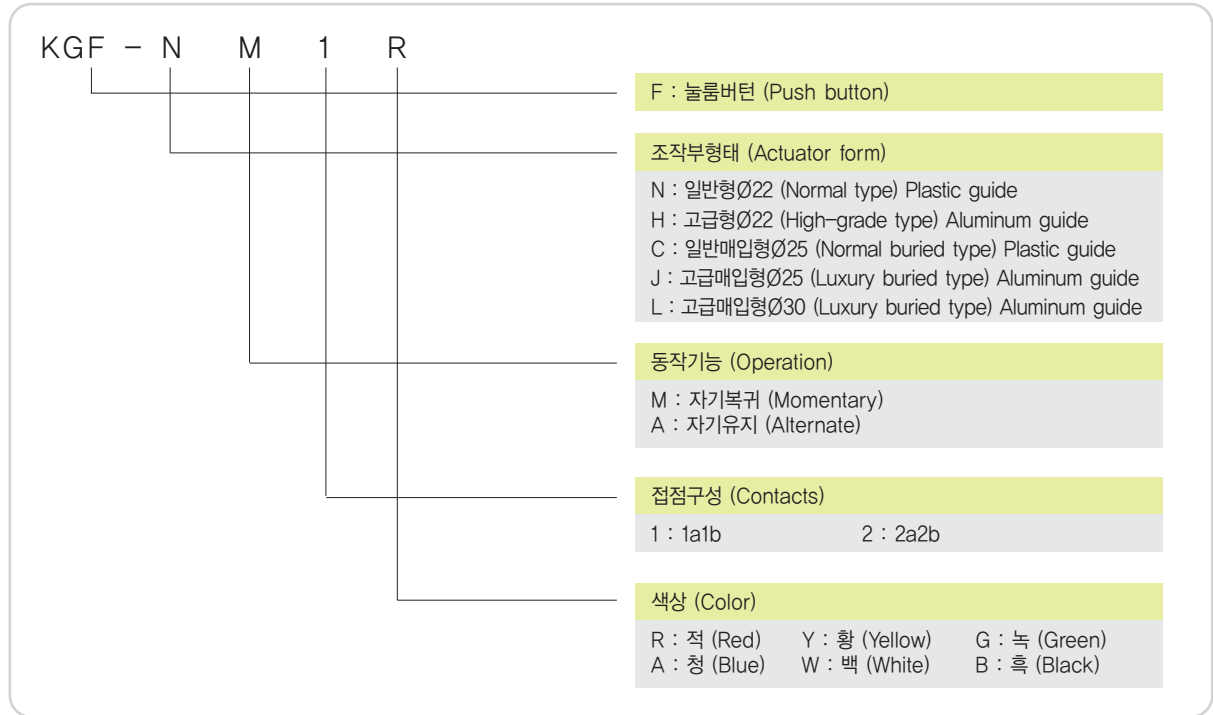
1차 입력전압 (Rated voltage)	정격전류 (Rated current)
12/24V d.c	18mA
110/220V, 380V a.c	3mA
125V d.c	5mA
220V d.c	3mA

기본회로 (Circuit diagrams)



● 누름버튼 스위치(Push button switch)

● 형명구성 (Name composition)



● 외형 및 도면 (External form/ Drawing)

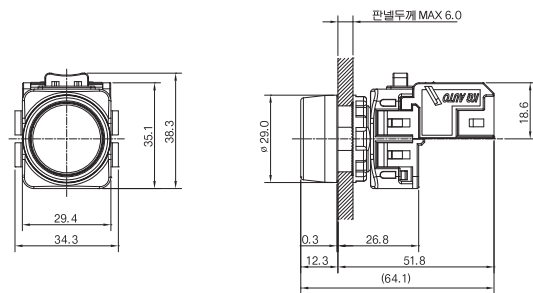
ø22 N형 플라스틱 돌출형 (Normal type) Plastic guide



색상 (Color)



KG F-NM1R (자기복귀, Momentary)
KG F-NA1R (자기유지, Alternate)



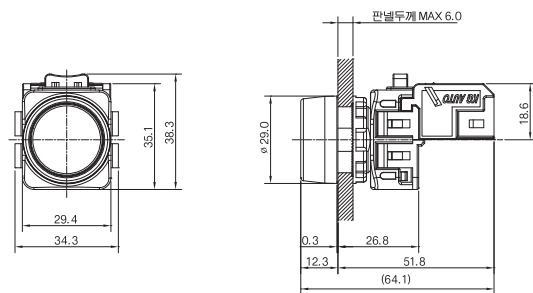
ø22 H형 알루미늄 돌출형 (High-grade type) Aluminum guide



색상 (Color)



KG F-HM1R (자기복귀, Momentary)
KG F-HA1R (자기유지, Alternate)



● 눌러버튼 스위치 (Push button switch)

● 외형 및 도면 (External form/ Drawing)

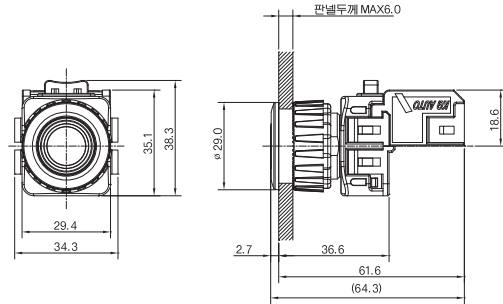
Ø25 C형 플라스틱 매입형 (Normal buried type) Plastic guide



색상 (Color)



KGF-CM1R (자기복귀, Momentary)
KGF-CA1R (자기유지, Alternate)



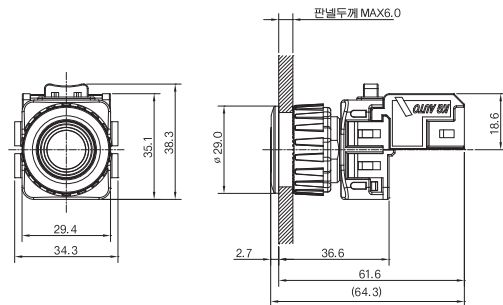
Ø25 J형 알루미늄 매입형 (Luxury buried type) Aluminum guide



색상 (Color)



KGF-JM1R (자기복귀, Momentary)
KGF-JA1R (자기유지, Alternate)



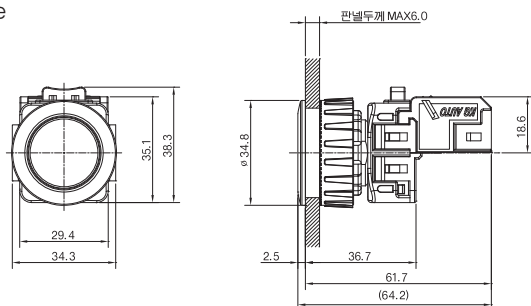
Ø30 L형 알루미늄 매입형 (Luxury buried type) Aluminum guide



색상 (Color)



KGF-LM1R (자기복귀, Momentary)
KGF-LA1R (자기유지, Alternate)





조광형 눌름버튼 스위치 (Push button lamp switch)

● 형명구성 (Name composition)

KGX - N M V2 1 R

X : 조광형 눌름버튼 (Push button lamp)

조작부형태 (Actuator form)

N : 일반형 \varnothing 22 (Normal type)Plastic guide
H : 고급형 \varnothing 22 (High-grade type)Aluminum guide
C : 일반매입형 \varnothing 25 (Normal buried type)Plastic guide
J : 고급매입형 \varnothing 25 (Luxury buried type)Aluminum guide
L : 고급매입형 \varnothing 30 (Luxury buried type)Aluminum guide

동작기능 (Operation)

M : 자기복귀 (Momentary)
A : 자기유지 (Alternate)

정격전압 (Voltage)

D1 : 110/125V d.c D2 : 12/24V d.c D3 : 220V d.c
V2 : 110/220V a.c V3 : 380V a.c

접점구성 (Contacts)

1 : 1a1b 2 : 2a2b

색상 (Color)

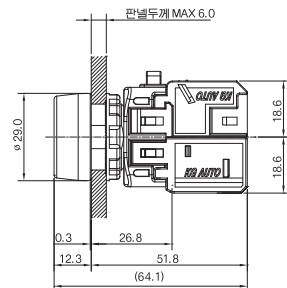
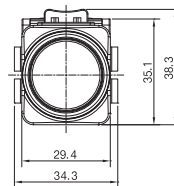
R : 적 (Red) Y : 황 (Yellow) G : 녹 (Green)
A : 청 (Blue) W : 백 (White) B : 흑 (Black)
LED Lamp white

● 외형 및 도면 (External form/ Drawing)

\varnothing 22 N형 플라스틱 돌출형 (Normal type) Plastic guide



색상 (Color)

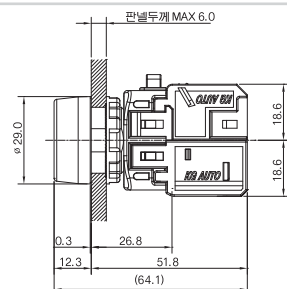
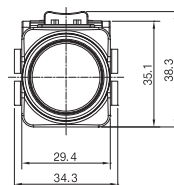


KGX-NMD21R (자기복귀, Momentary) / 12~24V d.c
KGX-NAD21R (자기유지, Alternate) / 12~24V d.c
KGX-NMV21R (자기복귀, Momentary) / 110~220V a.c
KGX-NAV21R (자기유지, Alternate) / 110~220V a.c

\varnothing 22 H형 알루미늄 돌출형 (High-grade type) Aluminum guide



색상 (Color)



KGX-HMD21R (자기복귀, Momentary) / 12~24V d.c
KGX-HAD21R (자기유지, Alternate) / 12~24V d.c
KGX-HMV21R (자기복귀, Momentary) / 110~220V a.c
KGX-HAV21R (자기유지, Alternate) / 110~220V a.c



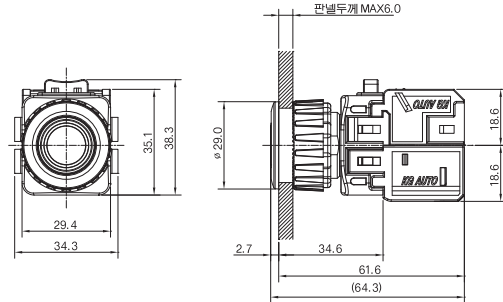
조광형 누름버튼 스위치 (Push button lamp switch)

● 외형 및 도면 (External form/ Drawing)

Ø25 C형 플라스틱 매입형 (Normal buried type) Plastic guide



색상 (Color)

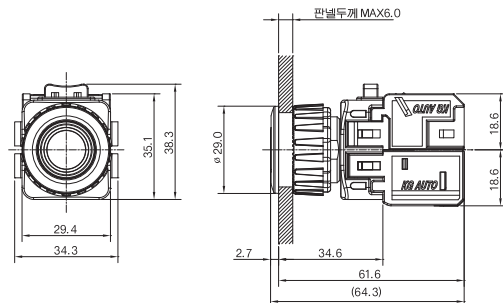


KGX-CMD21R (자기복귀, Momentary) / 12~24V d.c
 KGX-CAD21R (자기유지, Alternate) / 12~24V d.c
 KGX-CMV21R (자기복귀, Momentary) / 110~220V a.c
 KGX-CAV21R (자기유지, Alternate) / 110~220V a.c

Ø25 J형 알루미늄 매입형 (Luxury buried type) Aluminum guide



색상 (Color)

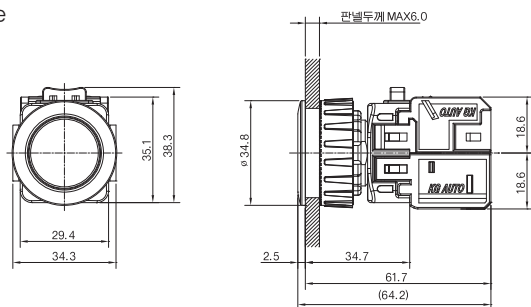


KGX-JMD21R (자기복귀, Momentary) / 12~24V d.c
 KGX-JAD21R (자기유지, Alternate) / 12~24V d.c
 KGX-JMV21R (자기복귀, Momentary) / 110~220V a.c
 KGX-JAV21R (자기유지, Alternate) / 110~220V a.c

Ø30 L형 알루미늄 매입형 (Luxury buried type) Aluminum guide



색상 (Color)



KGX-LMD21R (자기복귀, Momentary) / 12~24V d.c
 KGX-LAD21R (자기유지, Alternate) / 12~24V d.c
 KGX-LMV21R (자기복귀, Momentary) / 110~220V a.c
 KGX-LAV21R (자기유지, Alternate) / 110~220V a.c



표시등 (Pilot lamp)

형명구성(Name composition)

KGP - N V2 R

P : 표시등 (Pilot lamp)

조작부형태 (Actuator form)

N : 일반형Ø22 (Normal type) Plastic guide
H : 고급형Ø22 (High-grade type) Aluminum guide
C : 일반매입형Ø25 (Normal buried type) Plastic guide
J : 고급매입형Ø25 (Luxury buried type) Aluminum guide
L : 고급매입형Ø30 (Luxury buried type) Aluminum guide

정격전압 (Voltage)

D1 : 110/125V d.c D2 : 12/24V d.c D3 : 220V d.c
V2 : 110/220V a.c V3 : 380V a.c

색상 (Color)

R : 적 (Red) Y : 황 (Yellow) G : 녹 (Green)
A : 청 (Blue) W : 백 (White)

외형 및 도면 (External form/ Drawing)

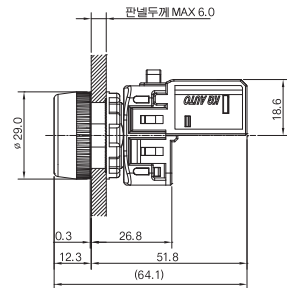
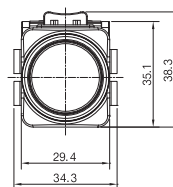
Ø22 N형 돌출캡형 (Normal type) Out cap form



색상 (Color)



KGP-ND2R / 12~24V d.c
KGP-NV2R / 110~220V a.c



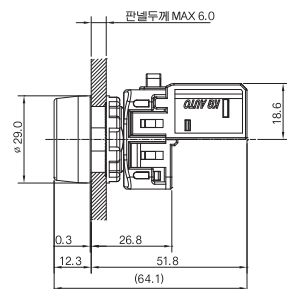
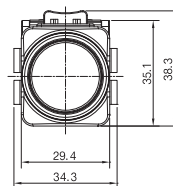
Ø22 H형 알루미늄 돌출형 (High-grade type) Aluminum guide



색상 (Color)



KGP-HD2R / 12~24V d.c
KGP-HV2R / 110~220V a.c





표시등(Pilot lamp)

외형 및 도면 (External form/ Drawing)

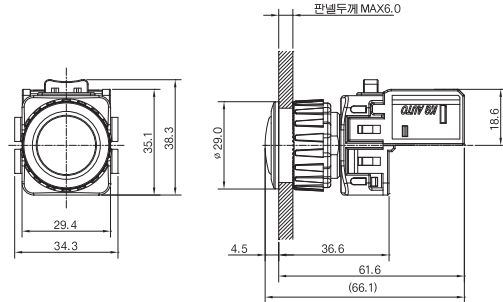
Ø25 C형 플라스틱 매입형 (Normal buried type) Plastic guide



색상 (Color)



KGP-CD2R / 12~24V d.c
KGP-CV2R / 110~220V a.c



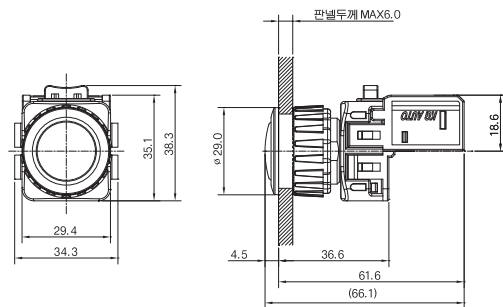
Ø25 J형 알루미늄 매입형 (Luxury buried type) Aluminum guide



색상 (Color)



KGP-JD2R / 12~24V d.c
KGP-JV2R / 110~220V a.c



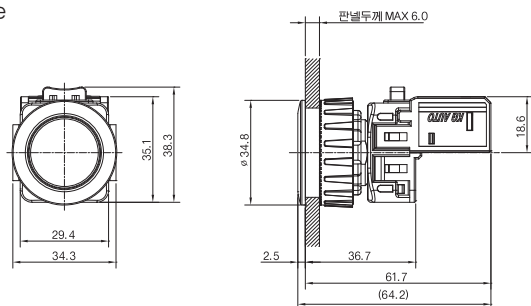
Ø30 L형 알루미늄 매입형 (Luxury buried type) Aluminum guide



색상 (Color)



KGP-LD2R / 12~24V d.c
KGP-LV2R / 110~220V a.c





세렉터 스위치(Selector switch)

형명구성 (Name composition)

KGS - N 2M 1

세렉터 스위치 (Selector switch)

조작부형태 (Actuator form)

N : 일반형ø22 (Normal type) Plastic guide
H : 고급형ø22 (High-grade type) Aluminum guide
C : 일반매입형ø25 (Normal buried type) Plastic guide
J : 고급매입형ø25 (Luxury buried type) Aluminum guide
L : 고급매입형ø30 (Luxury buried type) Aluminum guide

동작기능 (Operation)

2M : 2단 수동 (2 Manual return)
2R : 2단 자동 (2 Automatic return)
3M : 3단 수동 (3 Manual return)
3R : 3단 자동 (3 Automatic return)

접점구성 (Contacts)

1 : 1a1b 2 : 2a2b

외형 및 도면 (External form/ Drawing)

ø22 N형 플라스틱 돌출형 (Normal type) Plastic guide



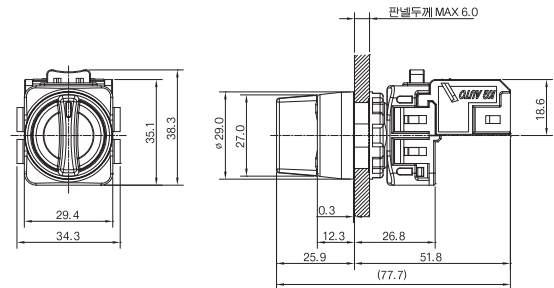
수동/Manual return



자동/Automatic return



KGS-N2M1 (2단수동-2Manual return)
KGS-N2R1 (2단자동-2Automatic return)
KGS-N3M2 (3단수동-3Manual return)
KGS-N3R2 (3단자동-3Automatic return)



ø22 H형 알루미늄 돌출형 (High-grade type) Aluminum guide



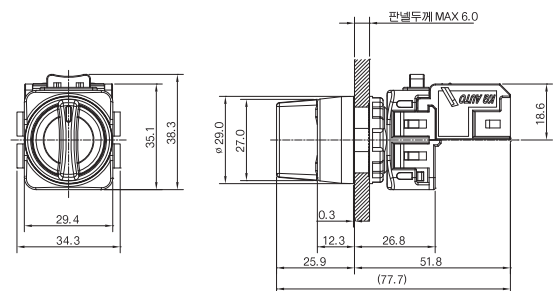
수동/Manual return



자동/Automatic return



KGS-H2M1 (2단수동-2Manual return)
KGS-H2R1 (2단자동-2Automatic return)
KGS-H3M2 (3단수동-3Manual return)
KGS-H3R2 (3단자동-3Automatic return)

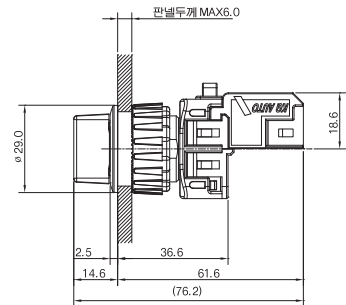
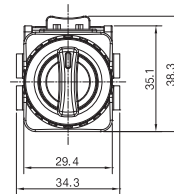




세렉터 스위치(Selector switch)

외형 및 도면(External form/Drawing)

Ø25 C형 플라스틱 매입형 (Normal buried type) Plastic guide



수동/Manual return

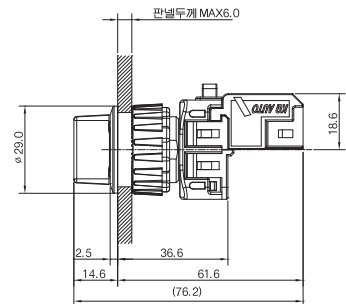
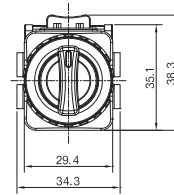


자동/Automatic return



KGS-C2M1 (2단수동-2Manual return)
KGS-C2R1 (2단자동-2Automatic return)
KGS-C3M2 (3단수동-3Manual return)
KGS-C3R2 (3단자동-3Automatic return)

Ø25 J형 알루미늄 매입형 (Luxury buried type) Aluminum guide



수동/Manual return

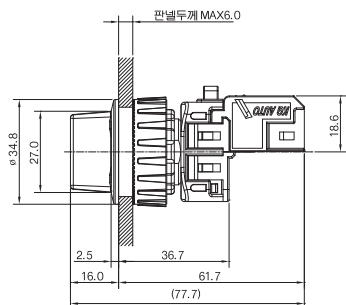
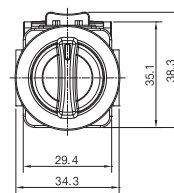


자동/Automatic return



KGS-J2M1 (2단수동-2Manual return)
KGS-J2R1 (2단자동-2Automatic return)
KGS-J3M2 (3단수동-3Manual return)
KGS-J3R2 (3단자동-3Automatic return)

Ø30 L형 알루미늄 매입형 (Luxury buried type) Aluminum guide



수동/Manual return



자동/Automatic return



KGS-L2M1 (2단수동-2Manual return)
KGS-L2R1 (2단자동-2Automatic return)
KGS-L3M2 (3단수동-3Manual return)
KGS-L3R2 (3단자동-3Automatic return)



조광형 선택터 스위치(Lamp selector switch)

● 형명구성 (Name composition)

KGT - N 2M 1 V R

T : 조광형 선택터 (Lamp selector switch)

조작부형태 (Actuator form)

N : 일반형Ø22 (Normal type) Plastic guide
H : 고급형Ø22 (High-grade type) Aluminum guide
C : 일반매입형Ø25 (Normal buried type) Plastic guide
J : 고급매입형Ø25 (Luxury buried type) Aluminum guide
L : 고급매입형Ø30 (Luxury buried type) Aluminum guide

동작기능 (Operation)

2M : 2단 수동(2 Manual return) 2R : 2단 자동(2 Automatic return)

접점구성 (Contacts)

1 : 1a1b 2 : 2a2b

정격전압 (Voltage)

D1 : 110/125V d.c D : 12/24V d.c D3 : 220V d.c
V : 110/220V a.c V3 : 380V a.c

색상 (Color)

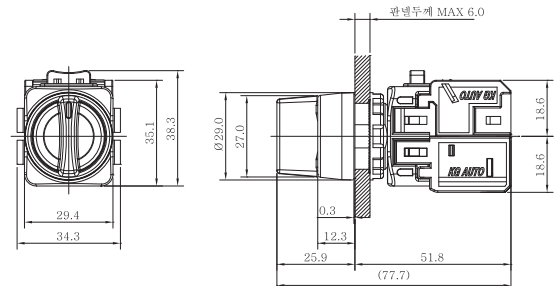
R : 적 (Red) Y : 황 (Yellow) G : 녹 (Green)
A : 청 (Blue) W : 백 (White)

● 외형 및 도면 (External form/ Drawing)

Ø22 N형 플라스틱 돌출형 (Normal type) Plastic guide



색상 (Color)

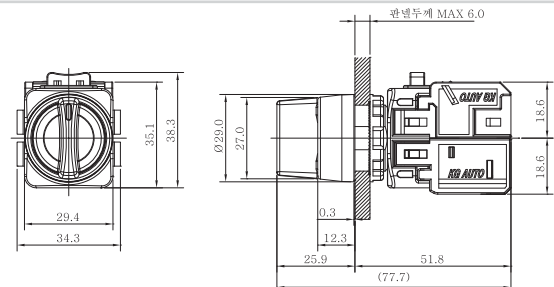


KGT-N2M1DR (2단수동-2Manual return) /12~24V d.c
KGT-N2M1DR (2단자동-2Automatic return) /12~24V d.c
KGT-N2M1VR (2단수동-3Manual return) /110~220V a.c
KGT-N2M1VR (2단자동-3Automatic return) /110~220V a.c

Ø22 H형 알루미늄 돌출형 (High-grade type) Aluminum guide



색상 (Color)



KGT-H2M1DR/KGT (2단수동-2Manual return) /12~24V d.c
KGT-H2R1DR/KGT (2단자동-2Automatic return) /12~24V d.c
KGT-H2M1VR/KGT (2단수동-2Manual return) /110~220V a.c
KGT-H2R1VR/KGT (2단자동-2Automatic return) /110~220V a.c



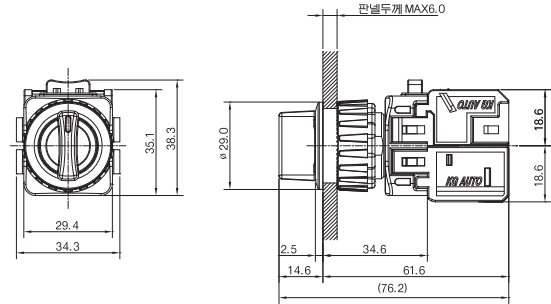
조광형 선택터 스위치(Lamp selector switch)

● 외형 및 도면 (External form/ Drawing)

Ø25 C형 플라스틱 매입형(Normal buried type)Plastic guide



색상 (Color)

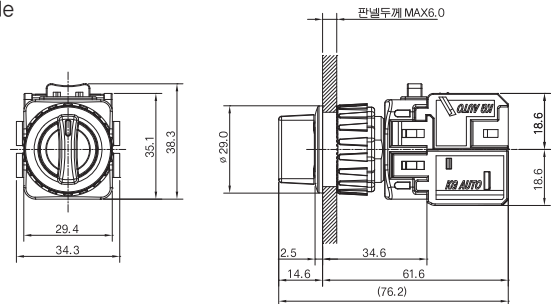


KGT-C2M1DR (2단수동-2Manual return) /12~24V d.c
KGT-C2R1DR (2단자동-2Automatic return) /12~24V d.c
KGT-C2M1VR (2단수동-2Manual return) /110~220V a.c
KGT-C2R1VR (2단자동-2Automatic return) /110~220V a.c

Ø25 J형 알루미늄 매입형 (Luxury buried type) Aluminum guide



색상 (Color)

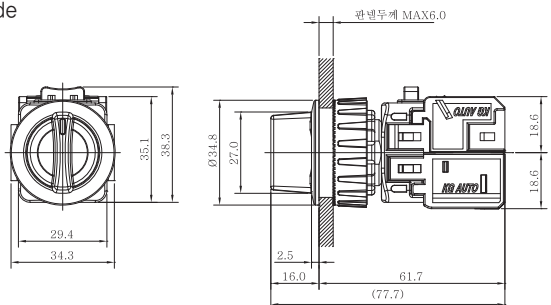


KGT-J2M1DR (수동-Manual return) /12~24V d.c
KGT-J2R1DR (자동-Automatic return) /12~24V d.c
KGT-J2M1VR (수동-Manual return) /110~220V a.c
KGT-J2R1VR (자동-Automatic return) /110~220V a.c

Ø30 L형 알루미늄 매입형 (Luxury buried type) Aluminum guide



색상 (Color)

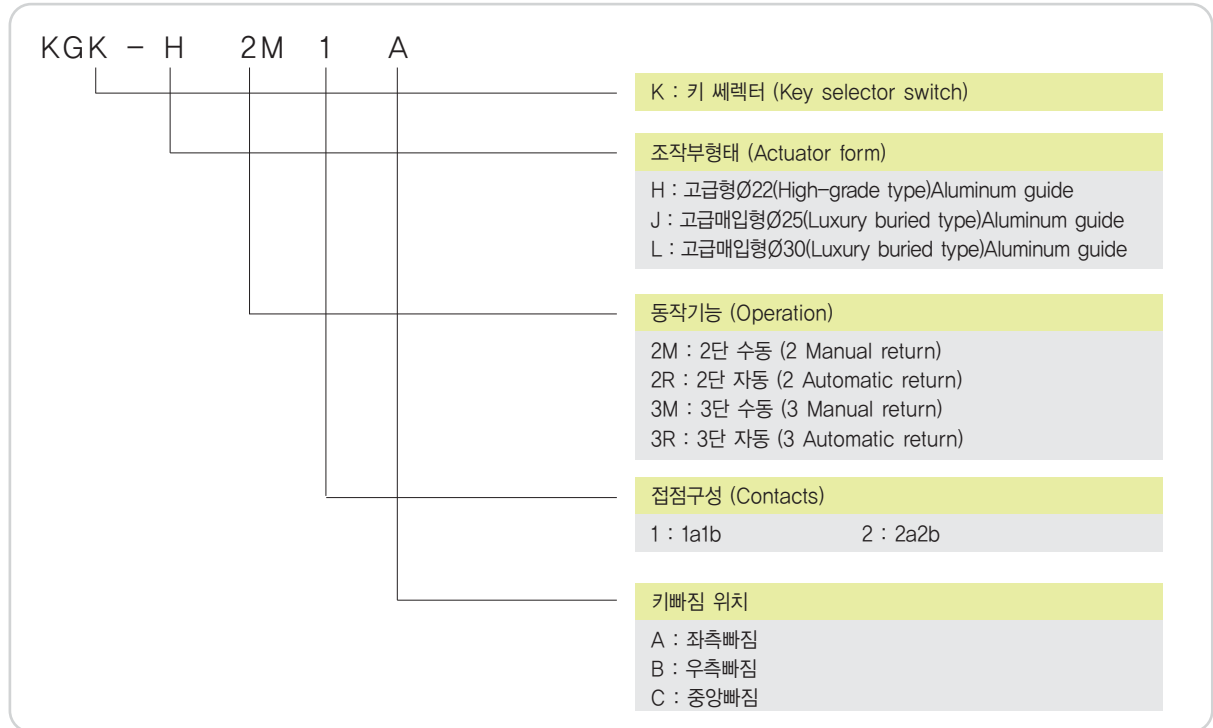


KGT-L2M1DR (2단수동-2Manual return) /12~24V d.c
KGT-L2R1DR (2단자동-2Automatic return)/12~24V d.c
KGT-L2M1VR (2단수동-2Manual return) /110~220V a.c
KGT-L2R1VR (2단자동-2Automatic return)/110~220V a.c



키세렉터 스위치(Key selector switch)

형명구성(Name composition)



외형 및 도면 (External form/ Drawing)

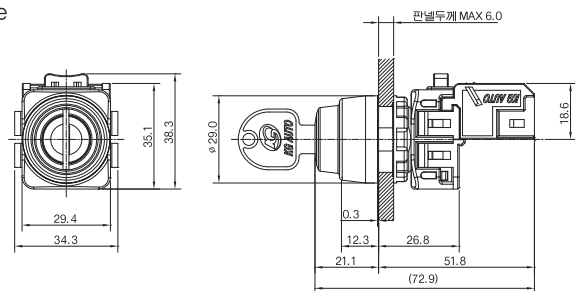
ø22 H형 알루미늄 돌출형 (High-grade type) Aluminum guide



수동/Manual return



자동/Automatic return



KGK-H2M1A (2단수동-2Manual return)

KGK-H2R1A (2단자동-2Automatic return)

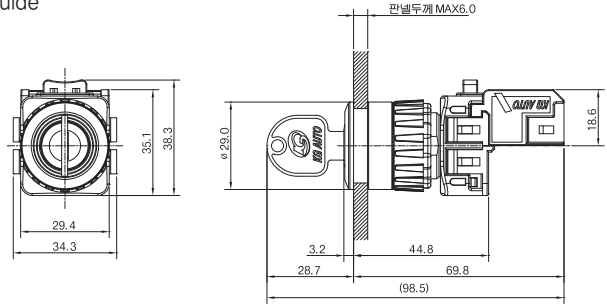
KGK-H3M2C (3단수동-3Manual return)

KGK-H3R2C (3단자동-3Automatic return)

키선택터 스위치(Key selector switch)

외형 및 도면 (External form/ Drawing)

Ø25 J형 알루미늄 매입형 (Luxury buried type) Aluminum guide



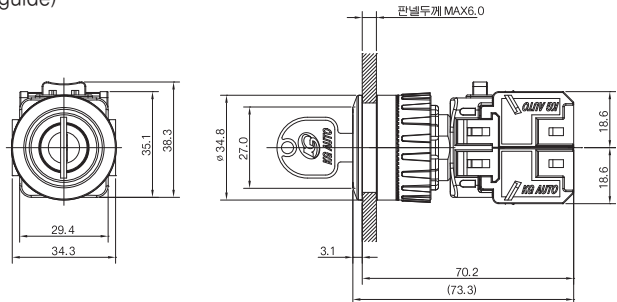
수동/Manual return

자동/Automatic return



KGK-J2M1A (2단수동-2Manual return)
KGK-J2R1A (2단자동-2Automatic return)
KGK-J3M2C (3단수동-3Manual return)
KGK-J3R2C (3단자동-3Automatic return)

Ø30 L형 알루미늄 매입형 (Luxury buried type) Aluminum guide



수동/Manual return

자동/Automatic return



KGK-L2M1A (2단수동-2Manual return)
KGK-L2R1A (2단자동-2Automatic return)
KGK-L3M2C (3단수동-3Manual return)
KGK-L3R2C (3단자동-3Automatic return)



전자부저 (Electric buzzer)

특징(Features)

1. 소형 경량으로 자동화 패널 취부시 적합합니다. (Small size, Light weight making automatic panel is suitable.)
2. 소비 전력이 적습니다. (Low consuming electrical power.)

형명구성(Name compoition)

KGB - N V2 B

전자부저(Electric Buzzer)

상부형태 (Upper part form)

N : 일반형∅22(Normal type) Plastic guide
 H : 고급형∅22(High-grade type) Aluminum guide
 C : 일반매입형∅25(Normal buried type) Plastic guide
 J : 고급매입형∅25(Luxury buried type) Aluminum guide
 L : 고급매입형∅30(Luxury buried type)Aluminum guide

정격전압 (Voltage)

D2 : 12/24V d.c V2 : 110/220V a.c

음색 (Tone)

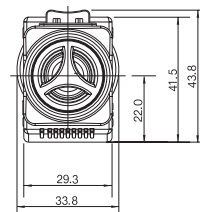
B : 단속음 (Beep)

정격 (Rated)

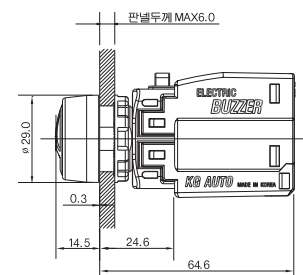
구분(Division)	전압(Voltage)	소비전류 (Consumption current)	음량(dB)	주파수(Hz)
N, H, C, J, L 타입	12/24V d.c	15mA	95dB	50~60Hz
N, H, C, J, L 타입	110/220V a.c	15mA	95dB	50~60Hz

외형 및 도면 (External form/ Drawing)

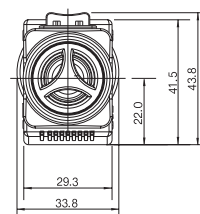
∅22 N형 플라스틱 돌출형 (Normal type) Plastic guide



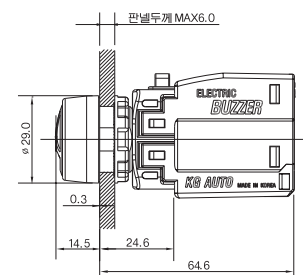
KGB-ND2B / 12~24V DC
 KGB-NV2B / 110~220V AC



∅22 H형 알루미늄 돌출형 (High-grade type) Aluminum guide



KGB-HD2B / 12~24V DC
 KGB-HV2B / 110~220V AC

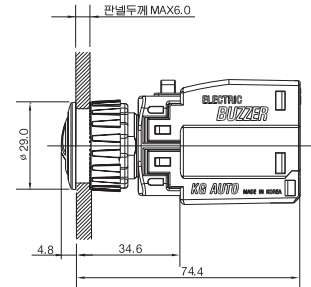
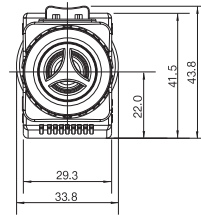




전자부저 (Electric buzzer)

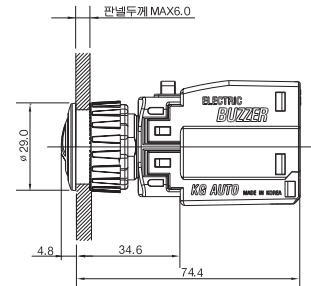
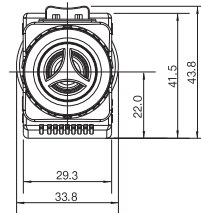
외형 및 도면 (External form/ Drawing)

Ø25 C형 플라스틱 매입형(Normal buried type)Plastic guide



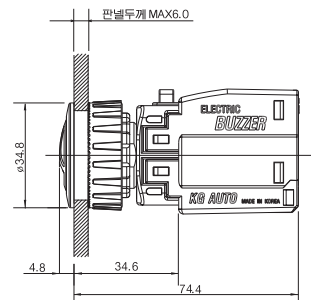
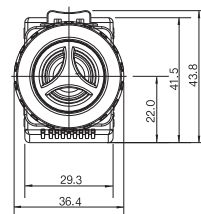
KGB-CD2B / 12~24V DC
KGB-CV2B / 110~220V AC

Ø25 J형 알루미늄 매입형 (Luxury buried type) Aluminum guide



KGB-JD2B / 12~24V DC
KGB-JV2B / 110~220V AC

Ø30 L형 알루미늄 매입형 (Luxury buried type) Aluminum guide



KGB-LD2B / 12~24V DC
KGB-LV2B / 110~220V AC



비상 정지용 누름버튼 스위치(Emergency push button switch)

● 형명구성(Name composition)

KGE - N 4B 1 R

E : 비상정지용 누름버튼 (Emergency push button)

조작부형태 (Actuator form)

N : 일반형ø22 (Normal type) Plastic guide

H : 고급형ø22 (High-grade type) Aluminum guide

C : 일반매입형ø25 (Normal buried type) Plastic guide

J : 고급매입형ø25 (Luxury buried type) Aluminum guide

L : 고급매입형ø30 (Luxury buried type) Aluminum guide

동작기능 (Operation)

4B : 자기복귀 (Momentary)

접점구성 (Contacts)

1 : 1a1b

2 : 2a2b

색상 (Color)

R : 적 (Red)

Y : 황 (Yellow)

G : 녹 (Green)

● 외형 및 도면 (External form/ Drawing)

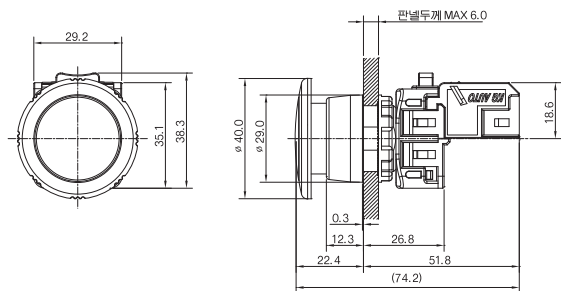
ø22 N형 플라스틱 돌출형 (Normal type) Plastic guide



색상 (Color)



KGE-N4B1R (자기복귀, Momentary)



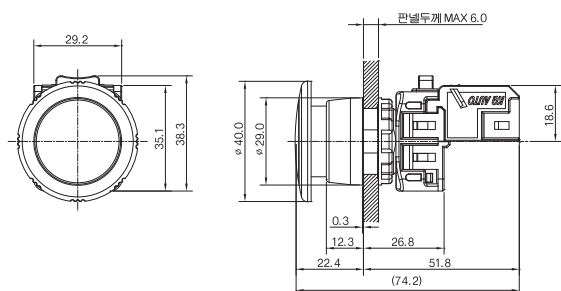
ø22 H형 알루미늄 돌출형 (High-grade type) Aluminum guide



색상 (Color)



KGE-H4B1R (자기복귀, Momentary)





비상 정지용 누름버튼 스위치 (Emergency push button switch)

● 외형 및 도면 (External form/ Drawing)

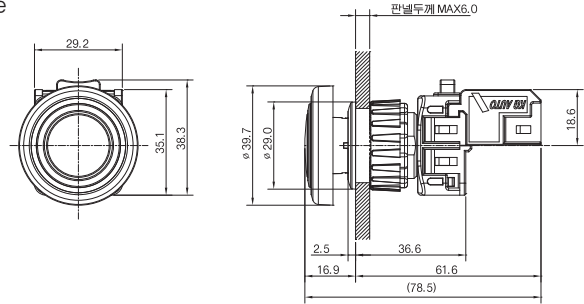
Ø25 C형 플라스틱 매입형 (Normal beried type) Plastic guide



색상 (Color)



KGE-C4B1R (자기복귀, Momentary)



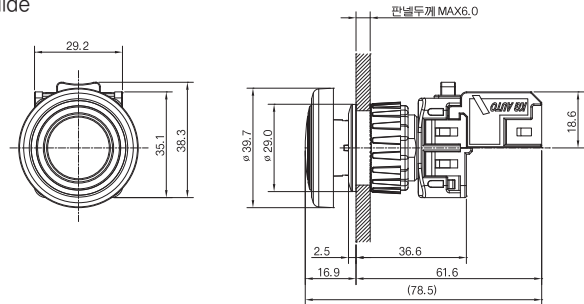
Ø25 J형 알루미늄 매입형 (Luxury buried type) Aluminum guide



색상 (Color)



KGE-J4B1R (자기복귀, Momentary)



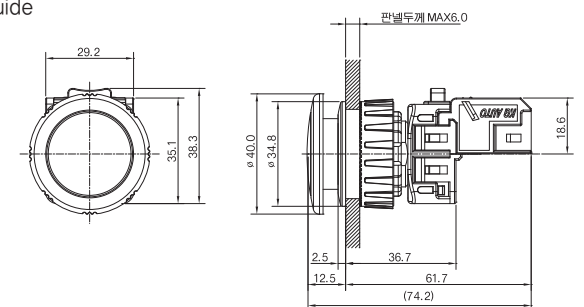
Ø30 L형 알루미늄 매입형 (Luxury buried type) Aluminum guide



색상 (Color)



KGE-L4B1R (자기복귀, Momentary)





비상 정지용 푸쉬록턴 리셋 스위치(Emergency push lock turn reset switch)

형명구성(Name composition)

KGE - N 4R 1 R

E : 비상정지용 눌러버튼 (Emergency push button)

조작부형태 (Actuator form)

N : 일반형ø22 (Normal type) Plastic guide
H : 고급형ø22 (High-grade type) Aluminum guide
C : 일반매입형ø25 (Normal buried type) Plastic guide
J : 고급매입형ø25 (Luxury buried type) Aluminum guide
L : 고급매입형ø30 (Luxury buried type) Aluminum guide

동작기능 (Operation)

4R : 푸쉬록턴리셋(Push lock turn reset)

접점구성 (Contacts)

1 : 1a1b 2 : 2a2b

색상 (Color)

R : 적(Red) G : 녹(Green)

외형 및 도면 (External form/ Drawing)

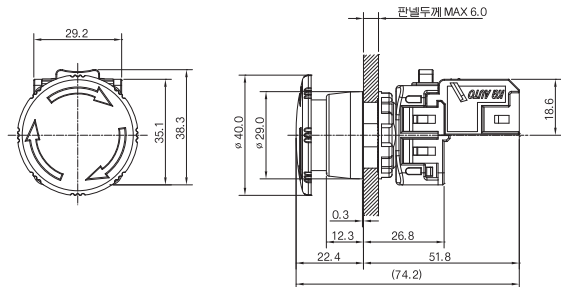
ø22 N형 플라스틱 돌출형 (Normal type) Plastic guide



색상 (Color)



KGE-N4R1R (푸쉬 록 턴 리셋, Push lock turn reset)



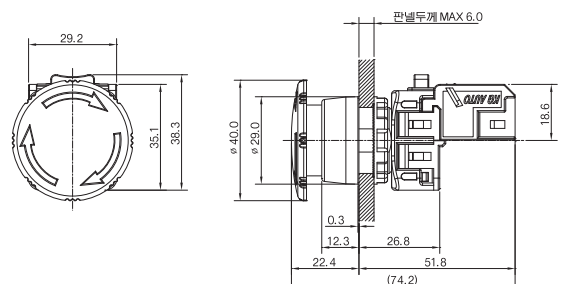
ø22 H형 알루미늄 돌출형 (High-grade type) Aluminum guide



색상 (Color)



KGE-H4R1R (푸쉬 록 턴 리셋, Push lock turn reset)



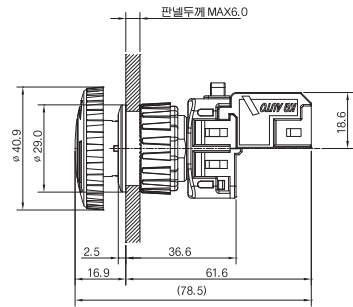
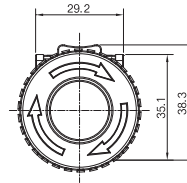
비상 정지용 푸쉬록턴 리셋 스위치(Emergency push lock turn reset switch)

외형 및 도면 (External form/ Drawing)

Ø25 C형 플라스틱 매입형 (Normal buried type) Plastic guide



색상 (Color)

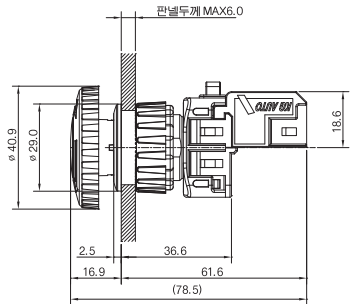
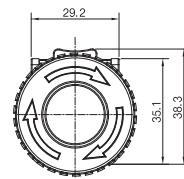


KGE-C4R1R (푸쉬 록턴 리셋, Push lock turn reset)

Ø25 J형 알루미늄 매입형 (Luxury buried type) Aluminum guide



색상 (Color)

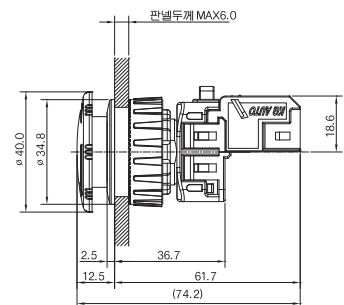
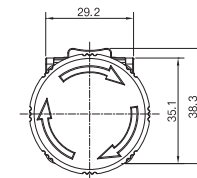


KGE-J4R1R (푸쉬 록턴 리셋, Push lock turn reset)

Ø30 L형 알루미늄 매입형 (Luxury buried type) Aluminum guide



색상 (Color)

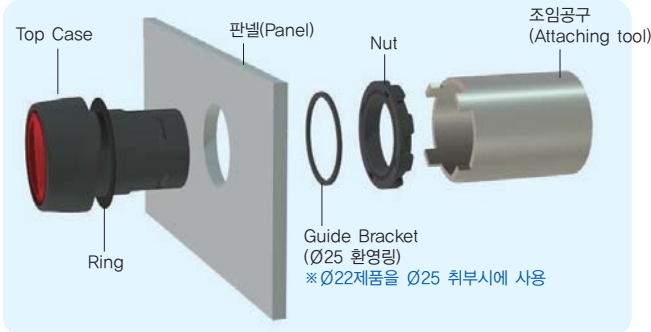


KGE-L4R1R (푸쉬 록턴 리셋, Push lock turn reset)



■ **Ø25 환영링 취부방법 및 제품 조립 순서**

The method which attaches and assembly order



■ **사각형 스위치 주문사양**

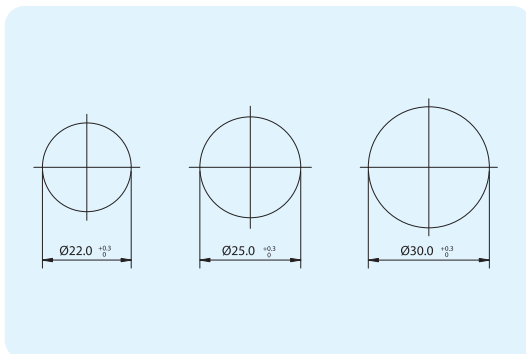
Square type order form



■ **사용방법 (User guide)**

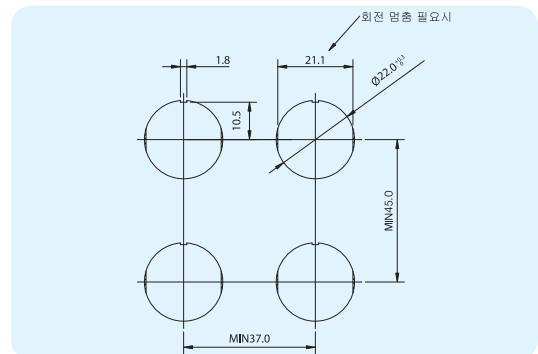
● **판넬 가공 치수 (Panel cutting size)**

[판넬가공치수]



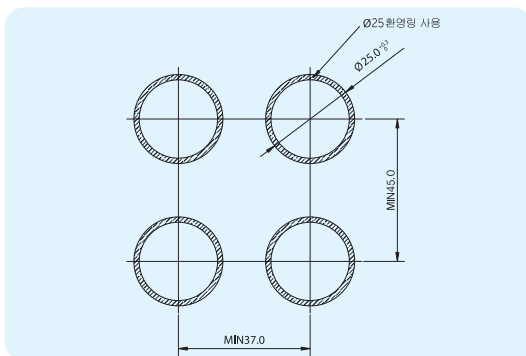
● **Ø22 일반형 취부시 (Ø22 Normal type attaching)**

[판넬 연속 가공치수]



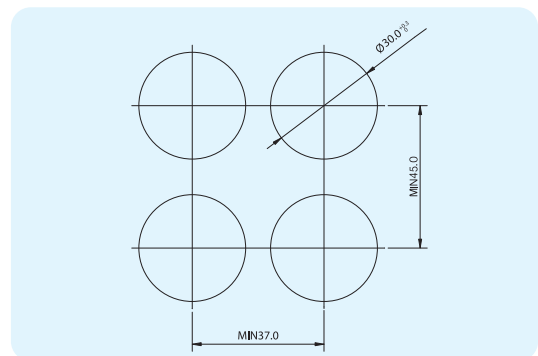
● **Ø25 환영링 취부시 (Ø25 normal buried type attaching)**

[판넬 연속 가공치수]



● **Ø30 고급 매입형 취부시 (Ø30 luxury buried type attaching)**

[판넬 연속 가공치수]



● **주의사항 (Attention)**

- 판넬 가공은 위와 같이 필요에 따라 선택 하여 주십시오.
(Panel cutting is above by a necessity to select)
- 부착 판넬의 두께는 1 ~ 5mm.
(Panel thickness 1~5mm)
- LAMP TYPE은 램프 단자와 스위치 단자의 배선이 바뀌지 않도록 주의 할 것.
(Lamp terminal and terminal wiring not to be exchange it will have attention)
- 부착 너트는 조임 토크를 20kgf · cm 이하로 할 것
(Attaching nut torque is below 20kgf)
- 단자 볼트의 조임 토크는 5kgf · cm 이하로 할 것
(Attaching bolt torque is below 5kgf.)
- 단자 볼트는 M3.5와 링 와셔 사용.
(Terminal bolt used ring washer and M3.5)

■ 부품(Parts)

구 분	모 양	형 식	설 명
접점 유니트 (Contactor unit)		KG-10	기본 접점 1a1b로 설계 되었으며 픽싱 플레이트와 조립 및 탈부착이 용이함. (Contact block was planned basic 1a1b and the maximum 4a4b untill there is a possibility of attaching)
픽싱 플레이트 (Fixing plate)		KG-F	조작부 및 접점 유니트와의 탈부착 용이 (Operating or contactor part attaching and remove is easy)
Ø25 환영링 (Ø25 ring)		KG-25	Ø25 판넬 취부시 사용(Ø22일반형, 고급형) (Ø25 panel attaching)
보조블럭 (Support block)		KG-20	접점부 보조 블록 (Contactor part support block)
Ø22알루미늄 가이드 (Ø22 Aluminum guide)		KG-22	조작부 Ø22 알루미늄 가이드 (Operation part Ø22 aluminum guide)
Ø30알루미늄 가이드 (Ø30 Aluminum guide)		KG-30	조작부 Ø30 알루미늄 가이드 (Operation part Ø30 aluminum guide)
Ø25알루미늄 가이드 (Ø25 Aluminum guide)		KG-35	조작부 Ø25 알루미늄 가이드 (Operation part Ø25 aluminum guide)
회전방지링 (Turn prevention ring)		KG-28	조작부 Ø22 회전 방지링 (Operation part Ø22 turn prevention ring)
조임공구 (Attaching tool)		KG-40	제어 스위치 너트 조임시 사용 (Use the attaching panel)
사각형 Cap타입 (Square type)		KG-45	제어 스위치 Ø25 사각형 주문형 제품 취부용 (Option order form of Ø25 square type)
접점블록 보호커버 (Contact block protect cover)	 (조립형상)	KG-50	접점부 전기 통전시 감전 보호 (When authorizing an electricity in contact block prevents an electrics shock)
조광바디 보호커버 (Lamp block protect cover)	 (조립형상)	KG-60	조광부 전기 통전시 감전 보호 (When authorizing an electricity in lamp block prevents an electrics shock)