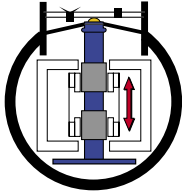


LINEAR



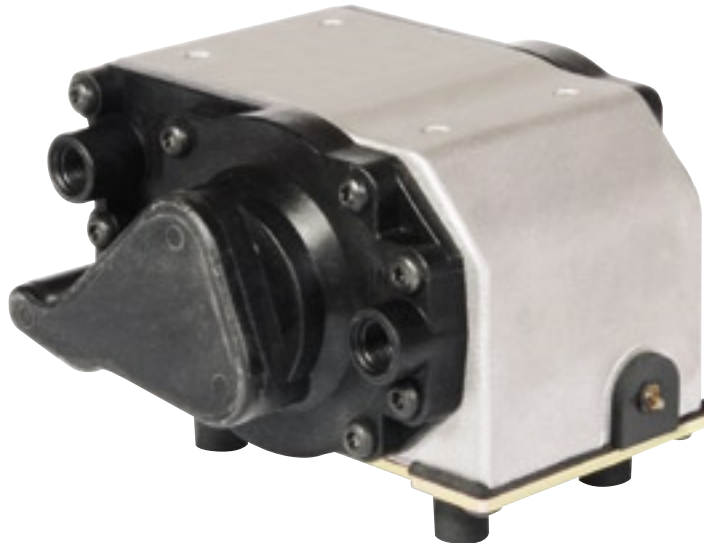
6000 SERIES

MODELS

6025SE	150057
6025SE/12VDC	150108
6025SE/24VDC	150109
6015SE	150098
6015SE/230	150102
6015SE/12VDC*	150110
6015SE/24VDC*	150111
6015SE/12VDC	150121
6015SE/24VDC	150122
6015SE/100	150101
6025SE/12VDC*	150112
6025SE/24VDC*	150113
6025SE/24VAC	150114
6025SE-XP/115	150115
6025SE/230VAC	150058
6025SE-XP/230	150129
6025SE/100-115/230**	150128

* includes control input leads

** 4-wire select voltage



FEATURES

- Low power consumption
- High efficiency
- Quiet operation
- Low starting current
- Low vibration
- Low pulsations
- Few moving parts
- No bearings
- Available with optional 4-20 ma controller input (DC Models)

BENEFITS

- Low operating cost
- Oil-less design
- Low noise - no expensive sound insulation required
- Low operating temperatures
- No need for pulsation chamber
- Less friction and heat — longer life
- Variable Output (with control input option) DC Models

ISO 9001
CERTIFIED

THOMAS
A Gardner Denver Product

6000 Series Performance Data

MODEL NUMBERS		6015SE/12VDC				6015SE/24VDC				6015SE			
MANUFACTURING CODE		150121 150110*				150122 150111*				150098			
HEAD CONFIGURATION		Pressure/Vacuum				Pressure/Vacuum				Pressure/Vacuum			
PRESSURE		Flow @ 12VDC				Flow @ 24VDC				Flow @ 115/60			
CFM @ PSI	LPM @ bar	CFM	LPM	AMPS	WATTS	CFM	LPM	AMPS	WATTS	CFM	LPM	AMPS	WATTS
0	0	1.10	33.0	1.6	19	1.10	33.0	1.6	19	1.10	31.1	0.23	15
1	.1	0.62	10.5	1.3	16	0.62	10.5	1.3	16	0.62	10.5	0.23	12
2	.2	0.19		1.1	13	0.19		1.1	13	0.09		0.24	9
3	.3												
MAX. CONTINUOUS PRESSURE		2.0 PSI		0.14 bar		2.0 PSI		0.14 bar		2.0 PSI		0.14 bar	
MAX. INTERMITTENT PRESSURE		2.3 PSI		0.16 bar		2.3 PSI		0.16 bar		2.3 PSI		0.16 bar	
VACUUM		Flow @ 12VDC				Flow @ 24VDC				Flow @ 115/60			
CFM @ IN.hg	LPM @ mbar (gauge)	CFM	LPM	AMPS	WATTS	CFM	LPM	AMPS	WATTS	CFM	LPM	AMPS	WATTS
0	0	1.10	31.0	1.6	19	1.10	31.0	1.6	19	1.10	31.0	0.24	15
2	-50	0.57	18.0	1.3	16	0.57	18.0	1.3	16	0.63	18.0	0.24	12
4	-100	0.10	9.0	1.1	13	0.10	9.0	1.1	13	0.10	9.0	0.24	9
6	-150		1.0				1.0				1.0		
8	-200												
MAX. CONTINUOUS VACUUM		4" hg		140 mbar		4" hg		140 mbar		4" hg		140 mbar	
MAX. RESTART VACUUM		4.75" hg		160 mbar		4.75" hg		160 mbar		4.75" hg		160 mbar	
MAX. AMBIENT TEMPERATURE		104°F		40°C		104°F		40°C		104°F		40°C	
MIN. AMBIENT TEMPERATURE		32°F		0°C		32°F		0°C		32°F		0°C	
MOTOR VOLTAGE/FREQUENCY		12VDC				24VDC				115/60/50/1			
THERMAL PROTECTOR		No				No				Single Trip			
NET WEIGHT		2.7 lbs.		1.2 Kg		2.7 lbs.		1.2 Kg		2.7 lbs.		1.2 Kg	
SHIP WEIGHT		3.8 lbs.		1.7 Kg		3.8 lbs.		1.7 Kg		3.8 lbs.		1.7 Kg	

MODEL NUMBERS		6015SE				6015SE			
MANUFACTURING CODE		150102				150101			
HEAD CONFIGURATION		Pressure/Vacuum				Pressure/Vacuum			
PRESSURE		Flow @ 230/50				Flow @ 100/60			
CFM @ PSI	LPM @ bar	CFM	LPM	AMPS	WATTS	CFM	LPM	AMPS	WATTS
0	0	1.10	31.1	0.12	15	1.10	31.1	0.23	15
1	.1	0.62	10.5	0.12	12	0.62	10.5	0.23	12
2	.2	0.09		0.12	9	0.09		0.24	9
3	.3								
MAX. CONTINUOUS PRESSURE		2.0 PSI		0.14 bar		2.0 PSI		0.14 bar	
MAX. INTERMITTENT PRESSURE		2.3 PSI		0.16 bar		2.3 PSI		0.16 bar	
VACUUM		Flow @ 230/50				Flow @ 100/60			
CFM @ IN.hg	LPM @ mbar (gauge)	CFM	LPM	AMPS	WATTS	CFM	LPM	AMPS	WATTS
0	0	1.10	31.0	0.12	15	1.10	31.0	0.24	15
2	-50	0.63	18.0	0.12	12	0.63	18.0	0.24	12
4	-100	0.10	9.0	0.12	9	0.10	9.0	0.24	9
6	-150		1.0				1.0		
8	-200								
MAX. CONTINUOUS VACUUM		4" hg		140 mbar		4" hg		140 mbar	
MAX. RESTART VACUUM		4.75" hg		160 mbar		4.75" hg		160 mbar	
MAX. AMBIENT TEMPERATURE		104°F		40°C		104°F		40°C	
MIN. AMBIENT TEMPERATURE		32°F		0°C		32°F		0°C	
MOTOR VOLTAGE/FREQUENCY		230/60/50/1				110/60/50/1			
THERMAL PROTECTOR		Single Trip				Single Trip			
NET WEIGHT		2.7 lbs.		1.2 Kg		2.7 lbs.		1.2 Kg	
SHIP WEIGHT		3.8 lbs.		1.7 Kg		3.8 lbs.		1.7 Kg	

* indicates unit with control input option

6000 Series Performance Data

MODEL NUMBERS		6025SE/12VDC				6025SE/24VDC				6025SE/24VAC				6025SE			
MANUFACTURING CODE		150108 150112*				150109 150113*				150114				150058 150128 @ 230v			
HEAD CONFIGURATION		Pressure/Vacuum				Pressure/Vacuum				Pressure/Vacuum				Pressure/Vacuum			
PRESSURE		Flow @ 12VDC				Flow @ 24VDC				Flow @ 24/60				Flow @ 230/50			
CFM @ PSI	LPM @ bar	CFM	LPM	AMPS	WATTS	CFM	LPM	AMPS	WATTS	CFM	LPM	AMPS	WATTS	CFM	LPM	AMPS	WATTS
0	0	1.50	42.5	2.7	36	1.50	42.5	1.5	36	2.00	56.6	2.75	40	2.00	56.6	0.25	40
1	.1	1.08	28.0	2.5	30	1.08	28.0	1.3	30	1.62	40.5	2.73	40	1.62	40.5	0.23	36
2	.2	0.73	12.5	2.1	25	0.73	12.5	1.1	25	1.20	23.0	2.63	40	1.20	23.0	0.22	32
3	.3	0.41	2.1	1.8	22	0.41	2.1	0.8	22	0.70	7.0	2.48	37	0.70	7.0	0.20	24
4		0.16		1.5	18	0.16		0.7	18	0.38		2.42	32	0.38		0.19	17
MAX. CONTINUOUS PRESSURE		4.0 PSI				4.0 PSI				4.0 PSI				4.0 PSI			
MAX. INTERMITTENT PRESSURE		4.5 PSI				4.5 PSI				4.7 PSI				4.7 PSI			
VACUUM		Flow @ 12VDC				Flow @ 24VDC				Flow @ 24/60				Flow @ 230V 50Hz			
CFM @ IN.hg	LPM @ mbar (gauge)	CFM	LPM	AMPS	WATTS	CFM	LPM	AMPS	WATTS	CFM	LPM	AMPS	WATTS	CFM	LPM	AMPS	WATTS
0	0	1.50	42.5	2.7	36	1.50	42.5	1.5	36	2.00	56.6	2.52	40	2.00	56.6	0.46	40
2	-50	1.09	34.0	2.5	30	1.09	34.0	1.3	30	1.62	48.8	2.65	40	1.62	48.8	0.45	36
4	-100	0.74	26.0	2.1	25	0.74	26.0	1.1	25	1.25	40.5	2.74	40	1.25	40.5	0.43	32
6	-150	0.43	19.0	1.8	22	0.43	19.0	0.8	22	0.80	31.8	2.82	37	0.80	31.8	0.38	24
8	-200	0.17	12.5	1.5	18	0.17	12.5	0.7	18	0.35	23.0	2.91	32	0.35	23.0	0.37	17
MAX. CONTINUOUS VACUUM		8" hg				8" hg				8" hg				8" hg			
MAX. RESTART VACUUM		8" hg				8" hg				9" hg				9" hg			
MAX. AMBIENT TEMPERATURE		104°F				104°F				104°F				104°F			
MIN. AMBIENT TEMPERATURE		32°F				32°F				32°F				32°F			
MOTOR VOLTAGE/FREQUENCY		12VDC				24VDC				24/50/60/1				230/50/60/1			
THERMAL PROTECTOR		No				No				Single Trip				Single Trip			
NET WEIGHT		3.3 lbs.				3.3 lbs.				3.3 lbs.				3.3 lbs.			
SHIP WEIGHT		4.2 lbs.				4.2 lbs.				4.2 lbs.				4.2 lbs.			

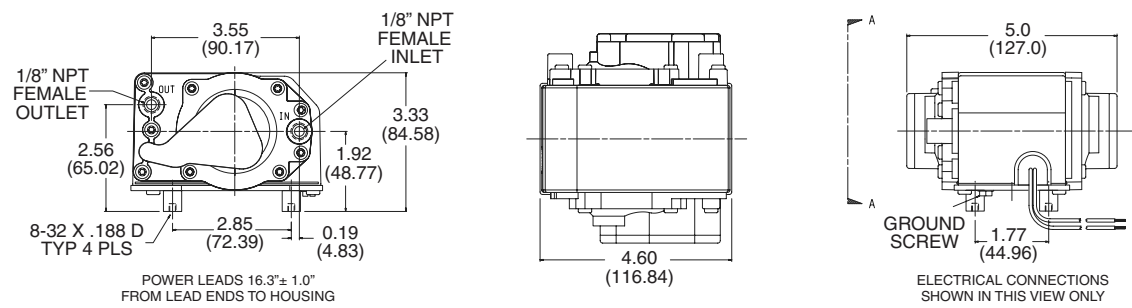
MODEL NUMBERS		6025SE				6025SE-XP **				6025SE-XP **			
MANUFACTURING CODE		150057 150128 @ 115v				150129				150115			
HEAD CONFIGURATION		Pressure/Vacuum				Pressure/Vacuum				Pressure/Vacuum			
PRESSURE		Flow @ 115/60				Flow @ 230/50				Flow @ 115/60			
CFM @ PSI	LPM @ bar	CFM	LPM	AMPS	WATTS	CFM	LPM	AMPS	WATTS	CFM	LPM	AMPS	WATTS
0	0	2.00	56.6	0.46	32	2.10	59.5	0.22	32	2.10	59.5	0.11	32
1	.1	1.62	40.5	0.45	16	1.80	47.0	0.24	34	1.80	47.0	0.12	34
2	.2	1.20	23.0	0.43	12	1.42	26.0	0.24	33	1.42	26.0	0.12	33
3	.3	0.70	7.0	0.39	7	1.00	13.0	0.25	30	1.00	13.0	0.13	30
4		0.38		0.37	7	0.50		0.26	23	0.50		0.13	23
MAX. CONTINUOUS PRESSURE		4.0 PSI				4.0 PSI				4.0 PSI			
MAX. INTERMITTENT PRESSURE		4.7 PSI				5.5 PSI				5.5 PSI			
VACUUM		Flow @ 115/60				Flow @ 230V 50Hz				Flow @ 115/60			
CFM @ IN.hg	LPM @ mbar (gauge)	CFM	LPM	AMPS	WATTS	CFM	LPM	AMPS	WATTS	CFM	LPM	AMPS	WATTS
0	0	2.00	56.6	0.46	32	2.10	59.5	0.22	32	2.10	59.5	0.11	32
2	-50	1.62	48.8	0.45	16	1.80	53.0	0.24	34	1.80	53.0	0.12	34
4	-100	1.25	40.5	0.43	12	1.42	47.0	0.24	33	1.42	47.0	0.12	33
6	-150	0.80	31.8	0.38	7	1.00	37.0	0.25	30	1.00	37.0	0.13	30
8	-200	0.35	23.0	0.37	7	0.50	26.0	0.26	23	0.50	26.0	0.13	23
MAX. CONTINUOUS VACUUM		8" hg				8" hg				8" hg			
MAX. RESTART VACUUM		9" hg				11" hg				11" hg			
MAX. AMBIENT TEMPERATURE		104°F				104°F				104°F			
MIN. AMBIENT TEMPERATURE		32°F				32°F				32°F			
MOTOR VOLTAGE/FREQUENCY		100-115/60/50/1				230/50/60/1				115/60/50/1			
THERMAL PROTECTOR		Single Trip				Single Trip				Single Trip			
NET WEIGHT		3.3 lbs.				3.3 lbs.				3.3 lbs.			
SHIP WEIGHT		4.2 lbs.				4.2 lbs.				4.2 lbs.			

* indicates unit with control input option

**** ATTENTION:** 6025SE-XP MODELS MUST OPERATE AGAINST A BACK PRESSURE OF 160 mbar / 2.3 PSI MINIMUM.
DO NOT OPERATE WITHOUT A LOAD.

Dimensions Millimeters are in ()

6025SE



WIRING LEGEND					
	12VDC	24VDC	24VAC	115 VAC	230 VAC
Black	(-)	(-)	X	X	X
White			X	X	X
Red	(+)				
Yellow		(+)			
Gray & Blue — 4-20 mA control input leads					

The information presented in this material is based on technical data and test results of nominal units. It is believed to be accurate and reliable and is offered as an aid to help in the selection of Thomas products. It is the responsibility of the user to determine the suitability of the product for his intended use and the user assumes all risk and liability whatsoever in connection therewith. Thomas Industries does not warrant, guarantee or assume any obligation or liability in connection with this information.

NOTE: Models pictured are representative of the series and do not represent a specific model number. Consult factory for detailed physical description.

THOMAS
A Gardner Denver Product

Thomas Products Division
1419 Illinois Ave
Sheboygan, WI 53082 USA
Phone: (920) 457-4891
Fax: (920) 451-4276
www.thomaspumps.com