

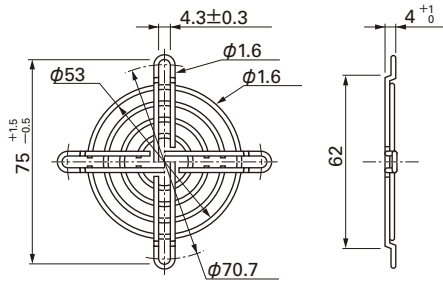
## Options (Unit : mm)

### Finger guards

Model : 109-139E Surface treatment : Nickel-chrome plating (silver)  
: 109-139H : Cation electropainting (black)

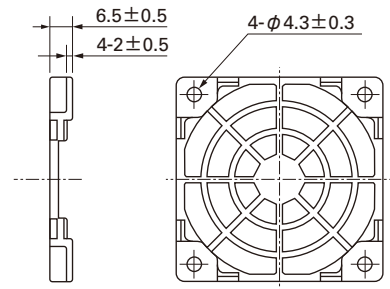
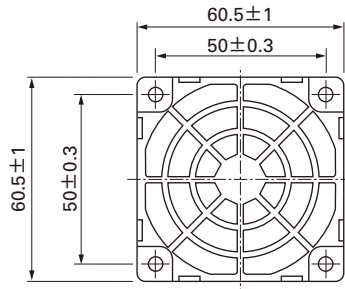
Color

Inlet side, Outlet side



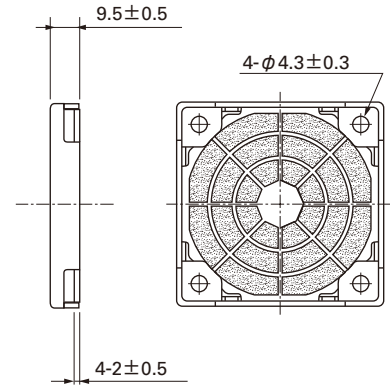
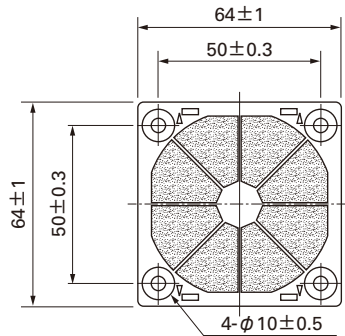
### Resin finger guards

Model : 109-1003G

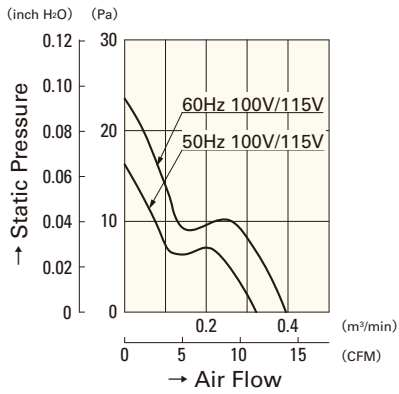


### Resin filter kits

Model : 109-1003F13 (13PPI), 109-1003F20 (20PPI)  
: 109-1003F30 (30PPI), 109-1003F40 (40PPI)



## Air Flow - Static Pressure Characteristics



109-130

109-133