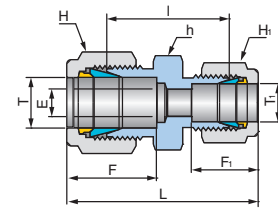
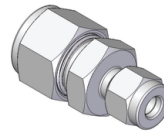


## Reducing Union

### URU



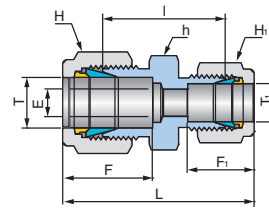
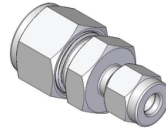
Connects Fractional(Inch) Tube

Part No.	Tube OD T		Tube OD T <sub>1</sub>		Dimensions (mm)										
	inch	mm	inch	mm	E Min.	h		H		H <sub>1</sub>		F	F <sub>1</sub>	I	L
						inch	mm	inch	mm	inch	mm				
URU-0201	1/8	3.17	1/16	1.68	1.3	7/16	11.11	7/16	11.11	5/16	7.93	12.7	8.6	20.6	31.0
URU-0301	3/16	4.76	1/16	1.68	1.3	7/16	11.11	1/2	12.70	5/16	7.93	13.7	8.6	21.9	32.3
URU-0302	3/16	4.76	1/8	3.17	2.3	7/16	11.11	1/2	12.70	7/16	11.11	13.7	12.7	23.4	36.6
URU-0401	1/4	6.35	1/16	1.68	1.3	1/2	12.70	9/16	14.28	5/16	7.93	15.2	8.6	23.1	34.3
URU-0402	1/4	6.35	1/8	3.17	2.3	1/2	12.70	9/16	14.28	7/16	11.11	15.2	12.7	24.6	38.6
URU-0403	1/4	6.35	3/16	4.76	3.0	1/2	12.70	9/16	14.28	1/2	12.70	15.2	13.7	25.4	39.4
URU-0502	5/16	7.93	1/8	3.17	2.3	9/16	14.28	5/8	15.87	7/16	11.11	16.3	12.7	25.9	39.6
URU-0504	5/16	7.93	1/4	6.35	4.8	9/16	14.28	5/8	15.87	9/16	14.28	16.3	15.2	27.4	42.2
URU-0601	3/8	9.52	1/16	1.68	1.3	5/8	15.87	11/16	17.46	5/16	7.93	16.8	8.6	25.4	36.6
URU-0602	3/8	9.52	1/8	3.17	2.3	5/8	15.87	11/16	17.46	7/16	11.11	16.8	12.7	26.9	40.9
URU-0604	3/8	9.52	1/4	6.35	4.8	5/8	15.87	11/16	17.46	9/16	14.28	16.8	15.2	28.4	43.2
URU-0605	3/8	9.52	5/16	7.93	6.4	5/8	15.87	11/16	17.46	5/8	15.87	16.8	16.3	29.5	44.2
URU-0802	1/2	12.70	1/8	3.17	2.3	13/16	20.63	7/8	22.22	7/16	11.11	22.9	12.7	28.4	45.2
URU-0804	1/2	12.70	1/4	6.35	4.8	13/16	20.63	7/8	22.22	9/16	14.28	22.9	15.2	29.5	47.0
URU-0806	1/2	12.70	3/8	9.52	7.1	13/16	20.63	7/8	22.22	11/16	17.46	22.9	16.8	31.0	48.5
URU-1006	5/8	15.87	3/8	9.52	7.1	15/16	23.81	1	25.40	11/16	17.46	24.4	16.8	31.8	49.3
URU-1008	5/8	15.87	1/2	12.70	10.4	15/16	23.81	1	25.40	7/8	22.22	24.4	22.9	31.8	52.1
URU-1204	3/4	19.05	1/4	6.35	4.8	1-1/16	26.98	1-1/8	28.57	9/16	14.28	24.4	15.2	31.8	49.3
URU-1206	3/4	19.05	3/8	9.52	7.1	1-1/16	26.98	1-1/8	28.57	11/16	17.46	24.4	16.8	33.3	50.8
URU-1208	3/4	19.05	1/2	12.70	10.4	1-1/16	26.98	1-1/8	28.57	7/8	22.22	24.4	22.9	33.3	53.6
URU-1210	3/4	19.05	5/8	15.87	12.7	1-1/16	26.98	1-1/8	28.57	1	25.40	24.4	24.4	33.3	53.6
URU-1608	1	25.40	1/2	12.70	10.4	1-3/8	34.92	1-1/2	38.10	7/8	22.22	31.2	22.9	40.9	63.2
URU-1612	1	25.40	3/4	19.05	15.7	1-3/8	34.92	1-1/2	38.10	1-1/8	28.57	31.2	24.4	40.9	63.2

Dimensions are for reference only and are subject to change without prior notice.  
E is minimum opening. F and L are typical finger tight.

## Reducing Union

### URU



#### Connects Metric Tube

Part No.	Tube OD T	Tube OD T <sub>1</sub>	Dimensions (mm)							
	mm	mm	E Min.	h mm	H mm	H <sub>1</sub> mm	F	F <sub>1</sub>	I	L
URU-M06M03	6	3	2.4	12.70	14.28	11.11	15.3	12.9	24.6	38.6
URU-M06M04	6	4	2.4	12.70	14.28	12.70	15.3	13.7	25.4	39.4
URU-M08M06	8	6	4.8	14.28	15.87	14.28	16.2	15.3	27.4	42.3
URU-M10M06	10	6	4.8	17.46	19.05	14.28	17.2	15.3	29.5	44.5
URU-M12M06	12	6	4.8	20.63	22.22	14.28	22.8	15.3	29.5	47.0
URU-M12M08	12	8	6.4	20.63	22.22	15.87	22.8	16.2	30.2	47.8
URU-M12M10	12	10	7.9	20.63	22.22	19.05	22.8	17.2	31.0	48.7
URU-M16M10	16	10	7.9	23.81	25.40	19.05	24.4	17.2	31.8	49.5
URU-M16M12	16	12	9.5	23.81	25.40	22.22	24.4	22.8	31.8	52.0
URU-M18M12	18	12	9.5	26.98	30.16	22.22	24.4	22.8	33.3	53.5
URU-M25M18	25	18	15.1	34.92	38.10	30.16	31.3	24.4	38.6	61.0
URU-M25M20	25	20	15.9	34.92	38.10	31.75	31.3	26.0	39.9	62.3

#### Connects Metric Tube to Fractional(Inch) Tube

Part No.	Tube OD T	Tube OD T <sub>1</sub>		Dimensions (mm)								
	mm	inch	mm	E Min.	h mm	H mm	H <sub>1</sub>		F	F <sub>1</sub>	I	L
URU-M0402	4	1/8	3.17	2.4	11.11	12.70	7/16	11.11	13.7	12.7	23.4	36.5
URU-M0404	4	1/4	6.35	2.4	12.70	12.70	9/16	14.28	13.7	15.2	25.4	39.4
URU-M0602	6	1/8	3.17	2.4	12.70	14.28	7/16	11.11	15.3	12.7	24.6	38.5
URU-M0604	6	1/4	6.35	4.8	12.70	14.28	9/16	14.28	15.3	15.2	26.2	41.0
URU-M0605	6	5/16	7.93	4.8	14.28	14.28	5/8	15.87	15.3	16.3	27.4	42.3
URU-M0804	8	1/4	6.35	4.8	14.28	15.87	9/16	14.28	16.2	15.2	27.4	42.3
URU-M1004	10	1/4	6.35	4.8	17.46	19.05	9/16	14.28	17.2	15.2	29.5	44.5
URU-M1006	10	3/8	9.52	7.1	17.46	19.05	11/16	17.46	17.2	16.8	31.0	45.9
URU-M1206	12	3/8	9.52	7.1	20.63	22.22	11/16	17.46	22.8	16.8	31.0	48.4
URU-M1208	12	1/2	12.70	9.5	20.63	22.22	7/8	22.22	22.8	22.9	31.0	51.2
URU-M1508	15	1/2	12.70	10.4	23.81	25.40	7/8	22.22	24.4	22.9	31.8	52.0

Dimensions are for reference only and are subject to change without prior notice.  
E is minimum opening. F and L are typical finger tight.