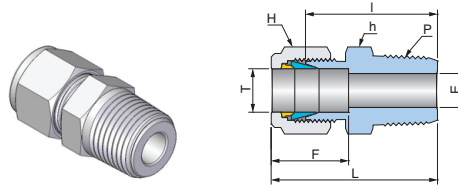


Male Connector UMC



Connects Fractional(Inch) Tube to Female NPT Thread

Part No.	Tube OD T		P NPT	Dimensions (mm)							
	inch	mm		E Min.	h		H		F	I	L
					inch	mm	inch	mm			
UMC-0101N	1/16	1.58	1/16	1.3	5/16	7.93	5/16	7.93	8.6	20.0	23.8
UMC-0102N	1/16	1.58	1/8	1.3	7/16	11.10	5/16	7.93	8.6	22.4	26.2
UMC-0104N	1/16	1.58	1/4	1.3	9/16	14.28	5/16	7.93	8.6	27.2	31.0
UMC-0201N	1/8	3.17	1/16	2.3	7/16	11.10	7/16	11.10	12.7	23.1	29.7
UMC-0202N	1/8	3.17	1/8	2.3	7/16	11.10	7/16	11.10	12.7	23.9	30.5
UMC-0204N	1/8	3.17	1/4	2.3	9/16	14.28	7/16	11.10	12.7	29.0	35.6
UMC-0206N	1/8	3.17	3/8	2.3	11/16	17.46	7/16	11.10	12.7	29.2	35.8
UMC-0208N	1/8	3.17	1/2	2.3	7/8	22.22	7/16	11.10	12.7	35.6	42.2
UMC-0302N	3/16	4.76	1/8	3.0	7/16	11.10	1/2	12.70	13.7	24.6	31.2
UMC-0304N	3/16	4.76	1/4	3.0	9/16	14.28	1/2	12.70	13.7	29.7	36.3
UMC-0401N	1/4	6.35	1/16	3.0	1/2	12.70	9/16	14.28	15.2	25.4	32.8
UMC-0402N	1/4	6.35	1/8	4.8	1/2	12.70	9/16	14.28	15.2	25.4	32.8
UMC-0404N	1/4	6.35	1/4	4.8	9/16	14.28	9/16	14.28	15.2	30.5	37.8
UMC-0406N	1/4	6.35	3/8	4.8	11/16	17.46	9/16	14.28	15.2	31.0	38.4
UMC-0408N	1/4	6.35	1/2	4.8	7/8	22.22	9/16	14.28	15.2	37.3	44.7
UMC-0412N	1/4	6.35	3/4	4.8	1-1/16	26.98	9/16	14.28	15.2	38.9	46.2
UMC-0502N	5/16	7.93	1/8	4.8	9/16	14.28	5/8	15.87	16.3	26.7	34.0
UMC-0504N	5/16	7.93	1/4	6.4	9/16	14.28	5/8	15.87	16.3	31.2	38.6
UMC-0506N	5/16	7.93	3/8	6.4	11/16	17.46	5/8	15.87	16.3	31.8	39.1
UMC-0602N	3/8	9.52	1/8	4.8	5/8	15.87	11/16	17.46	16.8	27.9	35.3
UMC-0604N	3/8	9.52	1/4	7.1	5/8	15.87	11/16	17.46	16.8	32.5	39.9
UMC-0606N	3/8	9.52	3/8	7.1	11/16	17.46	11/16	17.46	16.8	32.5	39.9
UMC-0608N	3/8	9.52	1/2	7.1	7/8	22.22	11/16	17.46	16.8	38.9	46.2
UMC-0612N	3/8	9.52	3/4	7.1	1-1/16	26.98	11/16	17.46	16.8	40.4	47.8
UMC-0616N	3/8	9.52	1	7.1	1-3/8	34.92	11/16	17.46	16.8	47.0	54.4
UMC-0802N	1/2	12.70	1/8	4.8	13/16	20.63	7/8	22.22	22.9	28.7	38.9
UMC-0804N	1/2	12.70	1/4	7.1	13/16	20.63	7/8	22.22	22.9	33.3	43.4
UMC-0806N	1/2	12.70	3/8	9.7	13/16	20.63	7/8	22.22	22.9	33.3	43.4
UMC-0808N	1/2	12.70	1/2	10.4	7/8	22.22	7/8	22.22	22.9	38.9	49.0
UMC-0812N	1/2	12.70	3/4	10.4	1-1/16	26.98	7/8	22.22	22.9	40.4	50.5
UMC-0816N	1/2	12.70	1	10.4	1-3/8	34.92	7/8	22.22	22.9	47.0	57.2
UMC-1006N	5/8	15.87	3/8	9.7	15/16	23.81	1	25.40	24.4	34.0	44.2
UMC-1008N	5/8	15.87	1/2	11.9	15/16	23.81	1	25.40	24.4	38.9	49.0
UMC-1012N	5/8	15.87	3/4	12.7	1-1/16	26.98	1	25.40	24.4	40.4	50.5
UMC-1206N	3/4	19.05	3/8	10.4	1-1/16	26.98	1-1/8	28.57	24.4	35.4	45.6
UMC-1208N	3/4	19.05	1/2	11.9	1-1/16	26.98	1-1/8	28.57	24.4	40.4	50.5
UMC-1212N	3/4	19.05	3/4	15.7	1-1/16	26.98	1-1/8	28.57	24.4	40.4	50.5
UMC-1216N	3/4	19.05	1	15.7	1-3/8	34.92	1-1/8	28.57	24.4	47.0	57.2
UMC-1412N	7/8	22.22	3/4	15.7	1-3/16	30.16	1-1/4	31.75	25.9	40.4	50.5
UMC-1416N	7/8	22.22	1	18.3	1-3/8	34.92	1-1/4	31.75	25.9	47.0	57.2
UMC-1608N	1	25.40	1/2	11.9	1-3/8	34.92	1-1/2	38.10	31.2	45.2	57.4
UMC-1612N	1	25.40	3/4	15.7	1-3/8	34.92	1-1/2	38.10	31.2	45.2	57.4
UMC-1616N	1	25.40	1	22.4	1-3/8	34.92	1-1/2	38.10	31.2	50.0	62.2
UMC-2016N	1-1/4	31.75	1	22.4	1-3/4	44.45	1-7/8	47.63	41.1	55.1	77.2
UMC-2020N	1-1/4	31.75	1-1/4	27.7	1-3/4	44.45	1-7/8	47.63	41.1	55.1	77.2
UMC-2424N	1-1/2	38.10	1-1/2	34.0	2-1/8	53.97	2-1/4	57.15	50.0	61.7	88.9
UMC-3232N	2	50.80	2	46.0	2-3/4	69.85	3	76.20	67.6	76.2	113.5

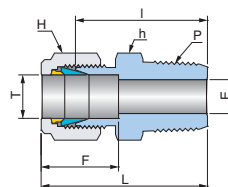
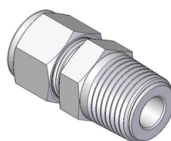
ISO Tapered threads are available for all fractional UMC. To order, add "R" as a suffix instead of "N".

Dimensions are for reference only and are subject to change without prior notice.

E is minimum opening. F and L are typical finger tight.

Male Connector

UMC



Connects Metric Tube to Female ISO Tapered Thread

Part No.	Tube OD T	P ISO7/1	Dimensions (mm)					
	mm		E Min.	h mm	H mm	F	I	L
UMC-M0202R	2	1/8	1.7	11.11	11.11	12.9	23.9	30.5
UMC-M0302R	3	1/8	2.4	11.11	11.11	12.9	23.9	30.5
UMC-M0304R	3	1/4	2.4	14.28	11.11	12.9	29.0	35.6
UMC-M0402R	4	1/8	2.4	11.11	12.70	13.7	24.6	31.2
UMC-M0404R	4	1/4	2.4	14.28	12.70	13.7	29.7	36.3
UMC-M0602R	6	1/8	4.8	12.70	14.28	15.3	25.4	32.8
UMC-M0604R	6	1/4	4.8	14.28	14.28	15.3	30.5	37.9
UMC-M0606R	6	3/8	4.8	17.46	14.28	15.3	31.0	38.4
UMC-M0608R	6	1/2	4.8	22.22	14.28	15.3	37.3	44.7
UMC-M0802R	8	1/8	4.8	14.28	15.87	16.2	26.7	34.2
UMC-M0804R	8	1/4	6.4	14.28	15.87	16.2	31.2	38.7
UMC-M0806R	8	3/8	6.4	17.46	15.87	16.2	31.8	39.3
UMC-M0808R	8	1/2	6.4	22.22	15.87	16.2	38.1	45.6
UMC-M1002R	10	1/8	4.8	17.46	19.05	17.2	28.7	36.3
UMC-M1004R	10	1/4	7.1	17.46	19.05	17.2	33.3	40.9
UMC-M1006R	10	3/8	7.9	17.46	19.05	17.2	33.3	40.9
UMC-M1008R	10	1/2	7.9	22.22	19.05	17.2	38.9	46.5
UMC-M1202R	12	1/8	4.8	20.63	22.22	22.8	28.7	38.8
UMC-M1204R	12	1/4	7.1	20.63	22.22	22.8	33.3	43.4
UMC-M1206R	12	3/8	9.5	20.63	22.22	22.8	33.3	43.4
UMC-M1208R	12	1/2	9.5	22.22	22.22	22.8	38.9	49.0
UMC-M1212R	12	3/4	9.5	26.98	22.22	22.8	40.4	50.5
UMC-M1404R	14	1/4	7.1	22.22	25.40	24.4	34.0	44.1
UMC-M1406R	14	3/8	9.5	22.22	25.40	24.4	34.0	44.1
UMC-M1408R	14	1/2	11.1	23.81	25.40	24.4	38.9	49.0
UMC-M1508R	15	1/2	11.9	23.81	25.40	24.4	38.9	49.0
UMC-M1606R	16	3/8	9.5	23.81	25.40	24.4	34.0	44.1
UMC-M1608R	16	1/2	11.9	23.81	25.40	24.4	38.9	49.0
UMC-M1612R	16	3/4	12.7	26.98	25.40	24.4	40.4	50.5
UMC-M1808R	18	1/2	11.9	26.98	30.16	24.4	40.4	50.5
UMC-M1812R	18	3/4	15.1	26.98	30.16	24.4	40.4	50.5
UMC-M2008R	20	1/2	11.9	30.16	31.75	26.0	42.2	52.3
UMC-M2012R	20	3/4	15.9	30.16	31.75	26.0	42.2	52.3
UMC-M2208R	22	1/2	11.9	30.16	31.75	26.0	42.2	52.3
UMC-M2212R	22	3/4	15.9	30.16	31.75	26.0	42.2	52.3
UMC-M2508R	25	1/2	11.9	34.92	38.10	31.3	45.2	57.5
UMC-M2512R	25	3/4	15.9	34.92	38.10	31.3	45.2	57.5
UMC-M2516R	25	1	21.8	34.92	38.10	31.3	50.0	62.3
UMC-M2816R	28	1	21.8	44.45	47.63	36.6	51.6	72.4
UMC-M2820R	28	1-1/4	21.8	47.63	47.63	36.6	52.3	73.1
UMC-M3020R	30	1-1/4	26.2	47.63	50.80	39.6	55.6	77.2
UMC-M3220R	32	1-1/4	28.6	47.63	50.80	42.0	56.6	79.6
UMC-M3824R	38	1-1/2	33.7	55.56	57.15	49.4	64.0	92.6

NPT threads are available for all metric UMC. To order, add "N" as a suffix instead of "R".

Dimensions are for reference only and are subject to change without prior notice.
E is minimum opening. F and L are typical finger tight.